

EUROPEAN INSURANCE OVERVIEW 2020

Solo undertakings

Year-end 2019

<https://eiopa.europa.eu/>

Print	ISBN 978-92-9473-277-4		doi:10.2854/530155	EI-AG-20-002-EN-C
PDF	ISBN 978-92-9473-270-5	2599-8323	doi:10.2854/78047	EI-AG-20-002-EN-N

Luxembourg: Publications Office of the European Union, 2020

© EIOPA, 2020

Reproduction is authorised provided the source is acknowledged.

For any use or reproduction of photos or other material that is not under the EIOPA copyright, permission must be sought directly from the copyright holders.

EUROPEAN INSURANCE OVERVIEW 2020

Solo undertakings

Year-end 2019

ABBREVIATIONS

Countries	
AT	Austria
BE	Belgium
BG	Bulgaria
CY	Cyprus
CZ	Czech Republic
DE	Germany
DK	Denmark
EE	Estonia
FI	Finland
FR	France
ES	Spain
GR	Greece
HR	Croatia
HU	Hungary
IS	Iceland
IE	Ireland
IT	Italy
LV	Latvia
LI	Liechtenstein
LT	Lithuania
LU	Luxembourg
MT	Malta
NL	Netherlands
NO	Norway
PL	Poland
PT	Portugal
RO	Romania
SK	Slovakia
SI	Slovenia
SE	Sweden
UK	United Kingdom

General	
CIC	Complementary Identification Code
CQS	Credit Quality Step
EPIFP	Expected profit in future premiums
EOA	Excess of assets over liabilities
GWP	Gross written premiums

General	
LACDT	Loss absorbing capacity of deferred tax assets
LTG	Long term guarantees
MCR	Minimum capital requirement
EOF	Eligible Own funds to meet the SCR
SCR	Solvency capital requirement

Non-Life lines of business	
Assistance	Assistance
C&S	Credit and Suretyship insurance
Casualty Reins	Casualty non-proportional reinsurance
Fire Prop	Fire and other damage to property insurance
Gen Liability	General liability insurance
Health Reins	Health non-proportional reinsurance
Inc Protect	Income protection insurance
Legal Exp	Legal expenses insurance
MAT	Marine, aviation and transport insurance
MAT Reins	Marine, aviation and transport reinsurance
Med Exp	Medical expense insurance
Misc Fin	Miscellaneous financial loss
Motor Liab	Motor vehicle liability insurance
Other Motor	Other motor insurance
Property Reins	Property non-proportional reinsurance
Workers Comp	Workers' compensation insurance

Life lines of business	
Annuities, health	Annuities stemming from non-life insurance contracts and relating to health insurance obligations
Annuities, non-health	Annuities stemming from non-life insurance contracts and relating to insurance obligations other than health insurance obligations
Health Ins	Health insurance
Health Reins	Health reinsurance
IL & UL	Index-linked and unit-linked insurance
Ins with pp	Insurance with profit participation
Life Reins	Life reinsurance
Other Life	Other life insurance

CONTENTS

ABBREVIATIONS	2
1. INTRODUCTION	4
2. LIFE MARKET OVERVIEW	5
2.1 Life Lines of Business	7
2.2 Life – EEA Premium breakdown	8
3. NON-LIFE MARKET OVERVIEW	9
3.2 Non-Life Lines of Business	14
3.3 Non-Life – EEA Premium breakdown	14
4. SOLVENCY & CAPITALISATION	16
4.1 SCR and MCR distribution	16
4.2 BSCR composition – Standard formula users	19
4.5 Tiering of own funds	20
4.4 Impact of loss absorbing capacity of deferred taxes (LAC DT) and expected profits included in future premiums (EPIFP)	21
4.5 SCR and MCR coverage	23
4.6 Long Term Guarantees and Transitional Measures	24
5. INVESTMENTS	26
5.1 Asset type breakdown	27
5.2 Credit Quality	28
5.3 Location of Investments	29
5.4 Use of Derivatives	30
5.5 Sector distribution	31

1. INTRODUCTION

The Annual European Insurance Overview is published by EIOPA as an extension of its statistical services in order to provide an easy-to-use and accessible overview of the European (re)insurance sector. The report is based on annually reported Solvency II information. This ensures that the data has a high coverage in all countries and is reported in a consistent manner across the EEA.

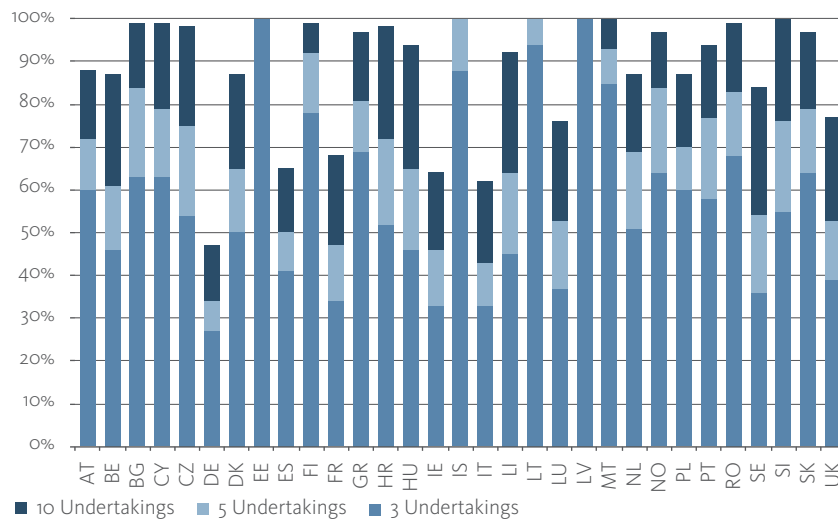
The report is objective, factual and data driven and does not contain analysis or policy messages. All indicators used in the report are calculated from the reported data from undertakings. While the topics and indicators covered is intended to be relatively stable over time, the report will be adapted to respond to changes in micro prudential and supervisory priorities. It will therefore support the supervisory community and industry with highly relevant and easily-accessible data at European level. This report is based on Annual reporting for 2019 and as such UK data are included in any EEA figures. Only countries with more than 3 undertakings will be displayed in charts with distributions.

The report is published with all charts data available for download in separate excel files.

2. LIFE MARKET OVERVIEW

For the majority of EEA countries (19) GWP increased in 2019. The Life market remains largely dominated by the Index-linked and Unit-linked insurance & Insurance with profit participation lines of business.

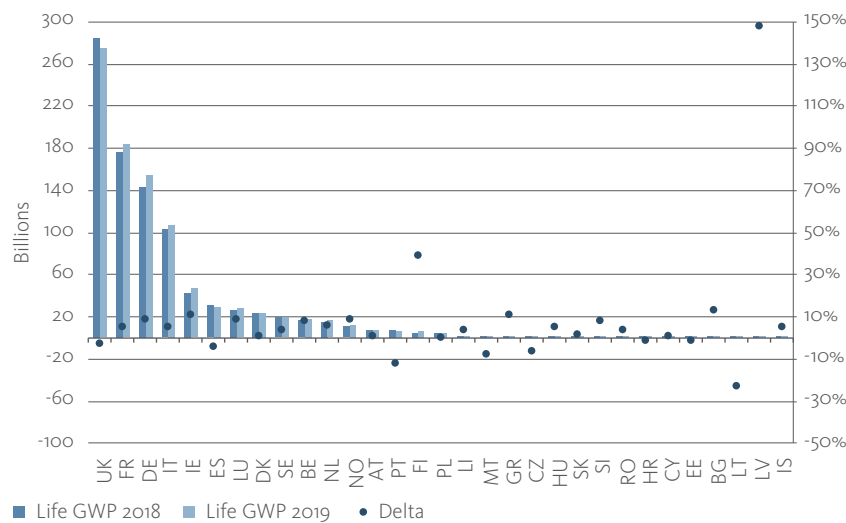
Figure 1: Concentration per country



-EE, IS, LT & LV all show a 3 undertaking market concentration above 80%. This is a result of the small number of companies in these countries.
-Overall, DE remains as the least concentrated country followed by IT, IE & FR.

The concentration indicator is a measure of the market share of the national GWP that the 3, 5, and 10 biggest premium writers account for.

Figure 2: Aggregate GWP growth per country

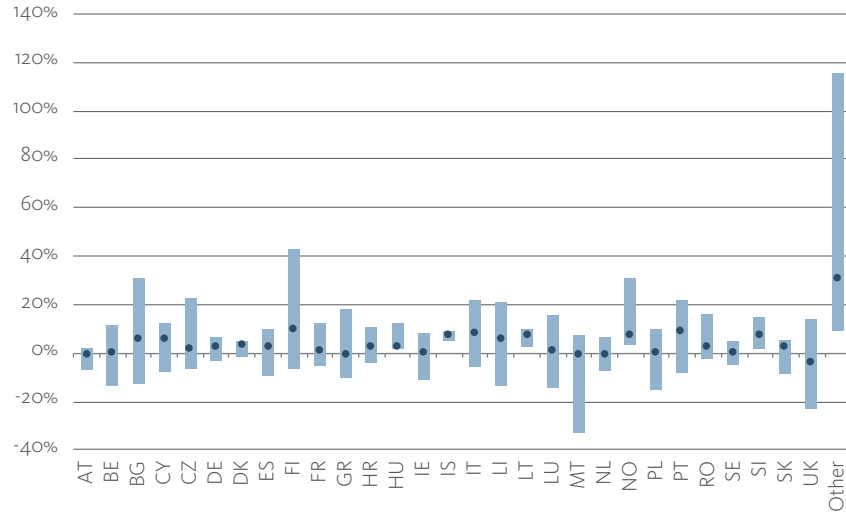


UK, FR, DE & IT continue to be the largest Life underwriters.
LV have the largest increase year on year at 147%; with FI reporting the second largest increase at 38%.
LT have the largest decrease at -24%.

The aggregated GWP for both 2018 and 2019 are displayed per country (left axis). "Delta" displays the increase/decrease in % GWP of this year compared to last on the right axis.

Figure 3: Distribution of GWP growth per country

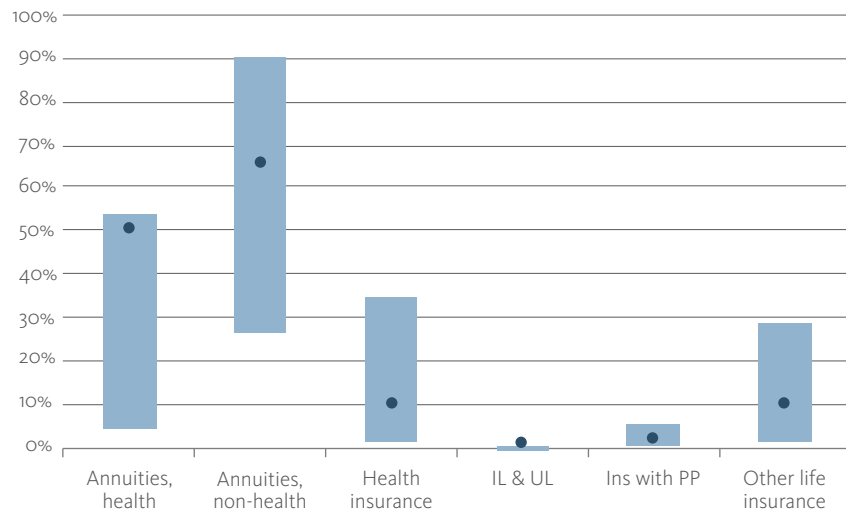
5 countries (AT, GR, MT, NL & UK) had a reduction in GWP at median level with UK's contraction of ~4% being the largest.



The year on year growth in GWP is the increase or decrease in premiums written this year compared to last. The chart shows interquartile range and median

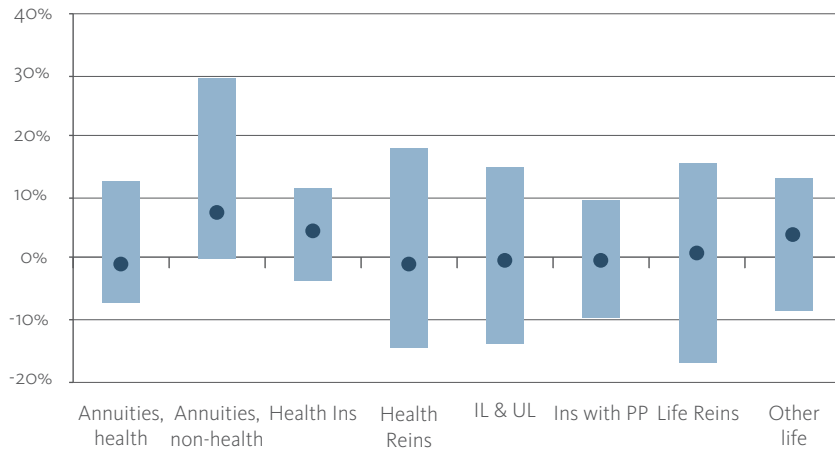
Figure 4: Share of reinsurance per LOB

Both Annuities LOBs are substantially more reinsured than any other Life line of business. 'IL&UL' is the least reinsured.



Defined as the percentage of GWP ceded to reinsurers. The chart shows interquartile range and median.

Figure 5: Year on year growth in GWP by line of business



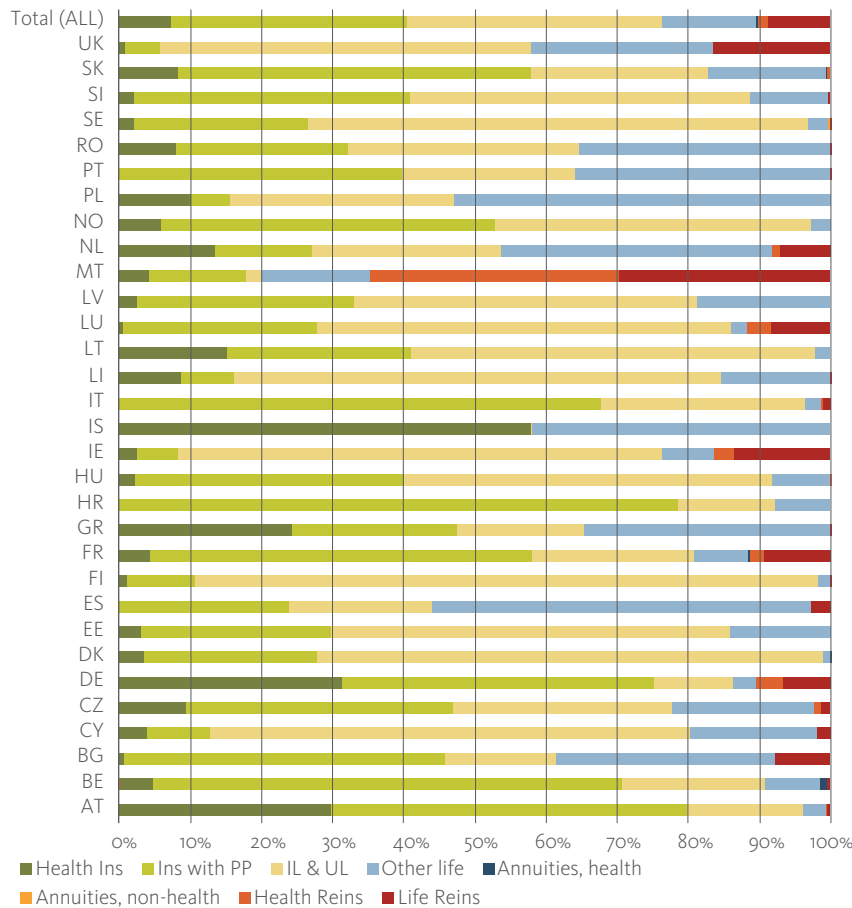
Only 3 out of 8 line of business ('Annuities non-health', 'Health Ins' & 'Other life') display an increase at the median level.

No LOB has decreased by more than 2% at a median level.

The year on year growth in GWP is defined as the total GWP for this year divided by the same figure for the preceding year, minus one. The chart shows interquartile range and median

2.1. LIFE LINES OF BUSINESS

Figure 6: Life – Line of business split per country based on GWP



- At an EEA level, the 'Ins with PP' and 'IL & UL' lines of business account for ~70% of GWP.

- 17 countries have a single line of business accounting for 50% or more of GWP.

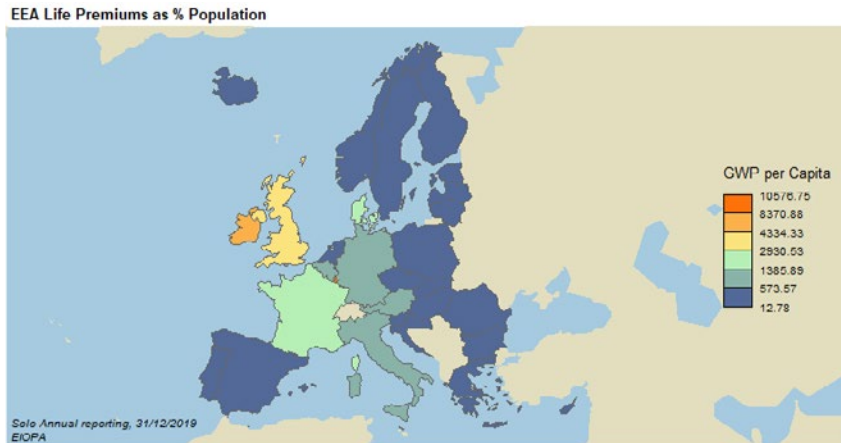
In MT the life market is dominated by reinsurance LOBs

The volume of GWP by line of business for each country expressed as a percentage of total GWP.

2.2 LIFE – EEA PREMIUM BREAKDOWN

Figure 7: Life – Gross written premiums divided by GDP

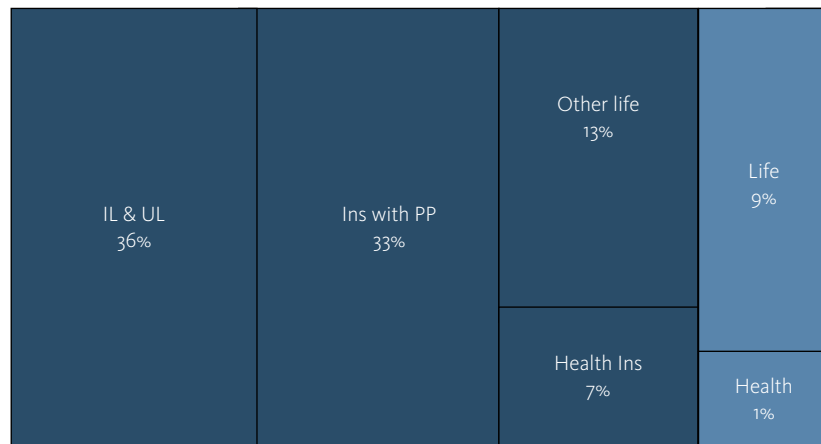
- LU(~10,500) & IE(~5,000) have the highest proportion of Life GWP per Capita.



The location of underwriting for any Life business written by all undertaking and their EEA branches, including by FOE and FPS, within the EEA. GDP figures sourced from Eurostat.

- IL & UL and Ins with PP are the dominant lines of business in the life market accounting for almost 70% of premiums.
- Annuities, health(<1%) and Annuities, non-health(<1%) are not visible in the chart.

Figure 8: Life – Lines of Business by premium volume

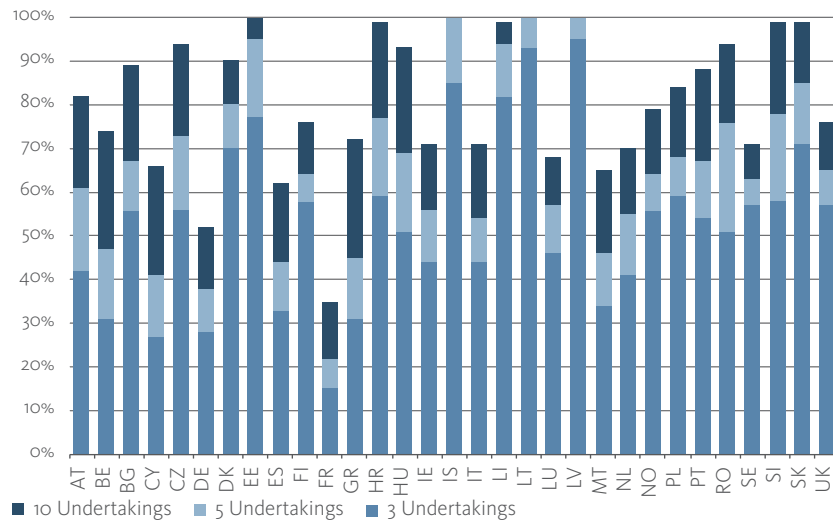


The total life market split into lines of business by premium volume. Split between direct business and reinsurance displayed.

3. NON-LIFE MARKET OVERVIEW

Non-Life GWP has increased for the vast majority of countries (27) in 2019. More than 50% of the Non-life market is made up of General Liability, Motor Vehicle Liability, Medical Expenses insurances & Fire and other damage to property insurance lines of business.

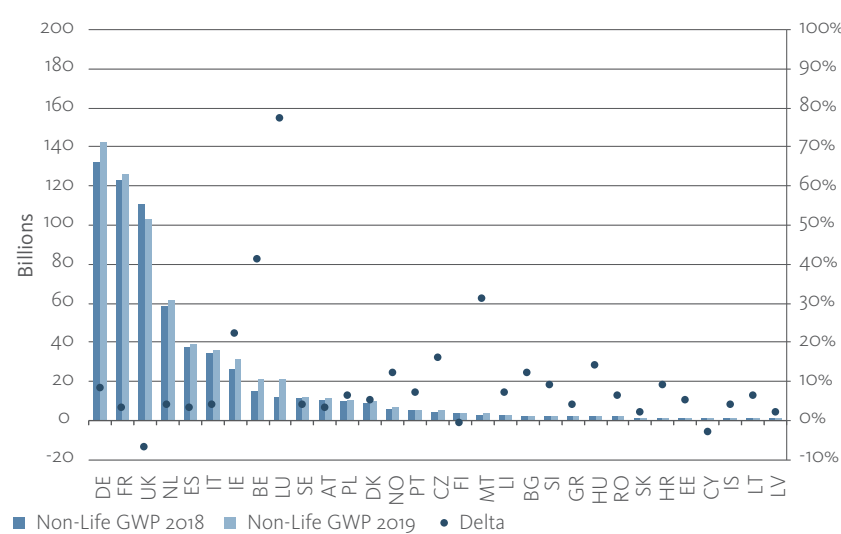
Figure 9: Concentration per country



IS, LI, LV & LT show a 3 undertaking market concentration above 80%. Such high levels of concentration are attributable to the relatively few companies in each country. The least concentrated market is FR followed by DE, CY, GR and ES.

The concentration indicator is a measure of the market share of the national GWP that the 3, 5, and 10 biggest premium writers account for.

Figure 10: Aggregate GWP growth per country

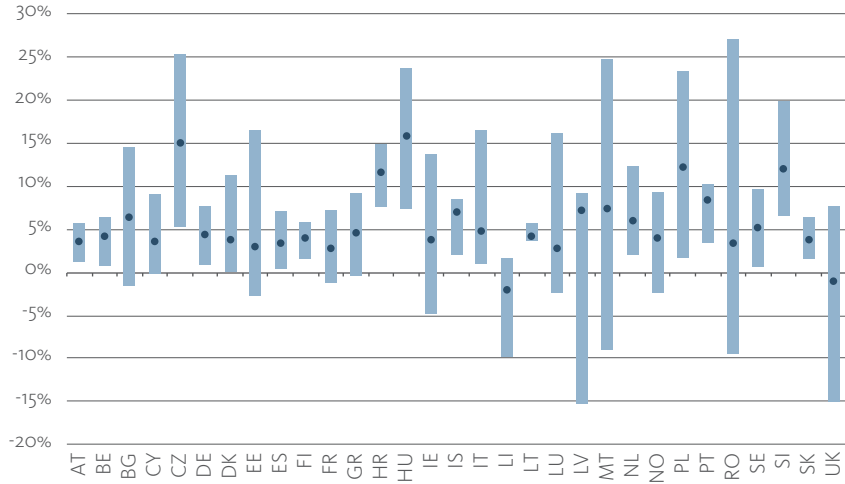


DE, FR & UK are the largest Non-Life underwriters. Growth of ~77% is observed for LU. BE at 41% have the second largest increase. UK, CY & FI are the only countries to display decreases in premium at -9%, -3% and -1% respectively.

The aggregated GWP for both 2018 and 2019 are displayed per country. Delta displays the increase/decrease in % GWP of this year compared to last.

Figure 11: Distribution of GWP growth per country

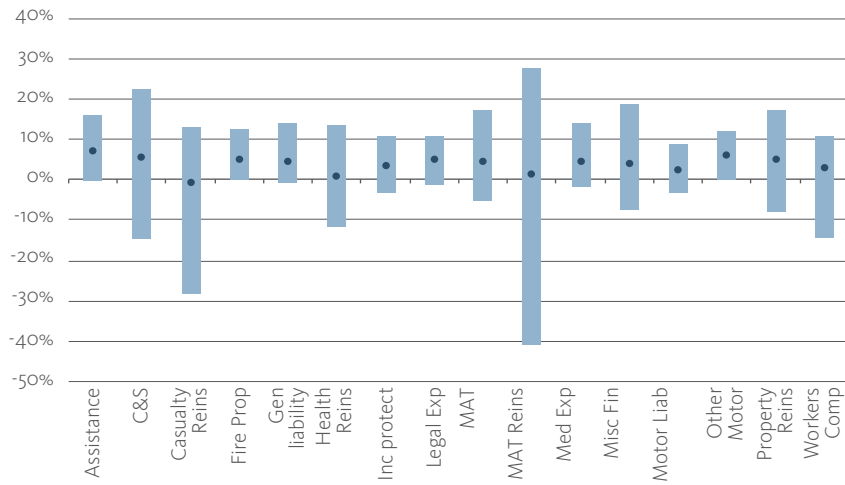
Median growth of ~15% is observed for CZ & HU. HR, PL & SI show a median value above 10%.
 Only LI & UK show a decrease in GWP volume at a median level this year with a decline of ~2% & ~1% respectively.



The year on year growth in GWP is the increase or decrease in premiums written this year compared to last. The interquartile range is displayed. The chart shows interquartile range and median

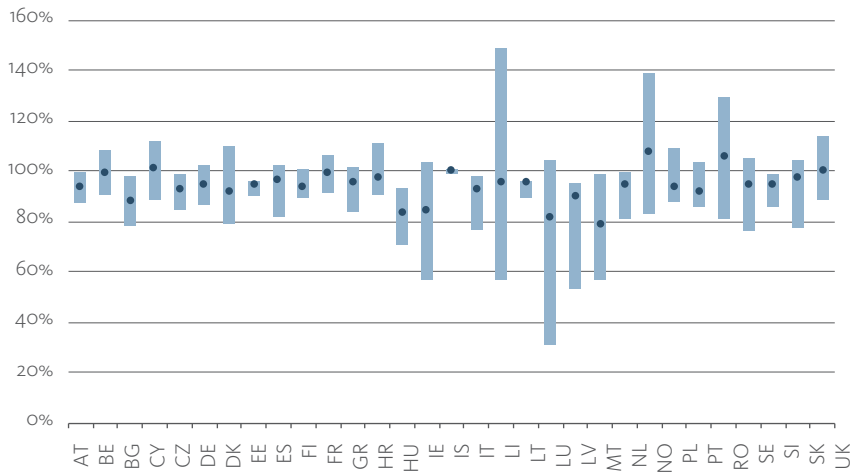
Figure 12: Year on year growth in GWP per line of business

Only Casualty Reins displays a decrease in premium volume at a median level of ~1%.
 The biggest increase is observed in Assistance & Other Motor.
 MAT Reins has by far the largest interquartile range of growth.



The year on year growth in GWP is defined as the total GWP for this year divided by the same figure for the preceding year, minus one; for each line of business. The chart shows interquartile range and median

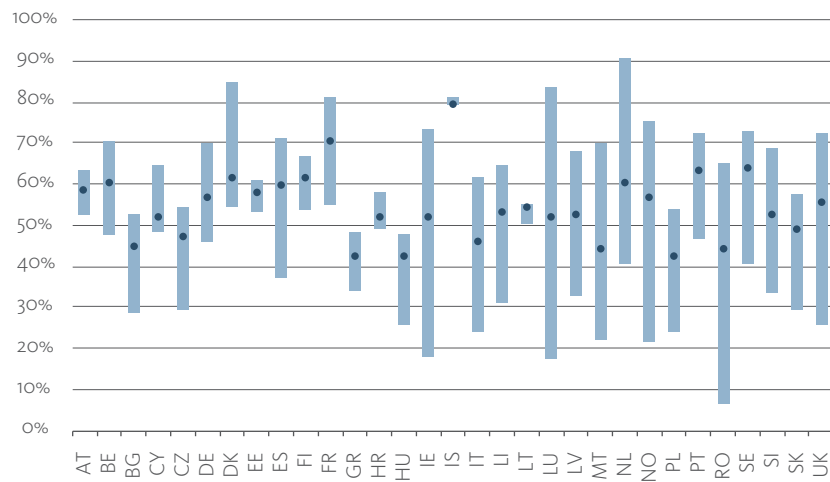
Figure 13: Combined ratio per country



Only CY, IS, NO, RO & UK display median combined ratio values at or above 100%. BE, ES, FR, HR, LI, LT & SK all above 95%.
 HU, IE, LU & MT report the lowest median values at between 79% and 85%.

The Combined Ratio is defined as the sum of claims and expenses divided by premiums earned. The chart shows interquartile range and median.

Figure 14: Claims ratio per country

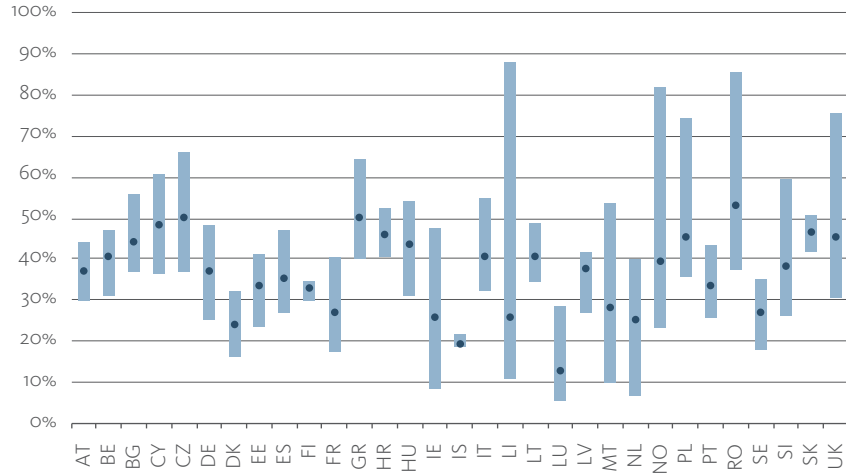


IS reports the highest median claims ratio at 79% whilst GR, HU & PL report the lowest at ~42%.

The claims ratio is defined as the claims paid divided by premiums earned. The chart shows interquartile range and median.

Figure 15: Expense ratio per country

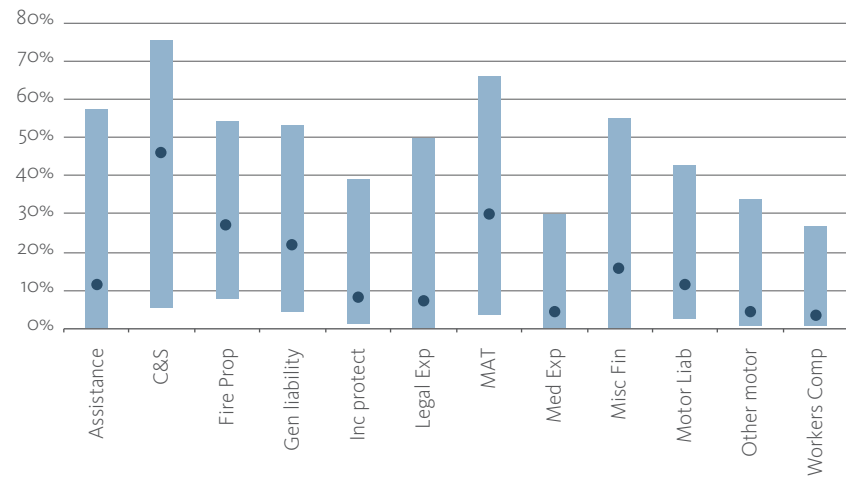
LU & IS report a median expense ratio below 20%, with LU as low as 12%.
 More than half of countries report a median expense ratio between 30% & 50%.



The expense ratio is defined as the expenses divided by premiums earned. The chart shows interquartile range and median.

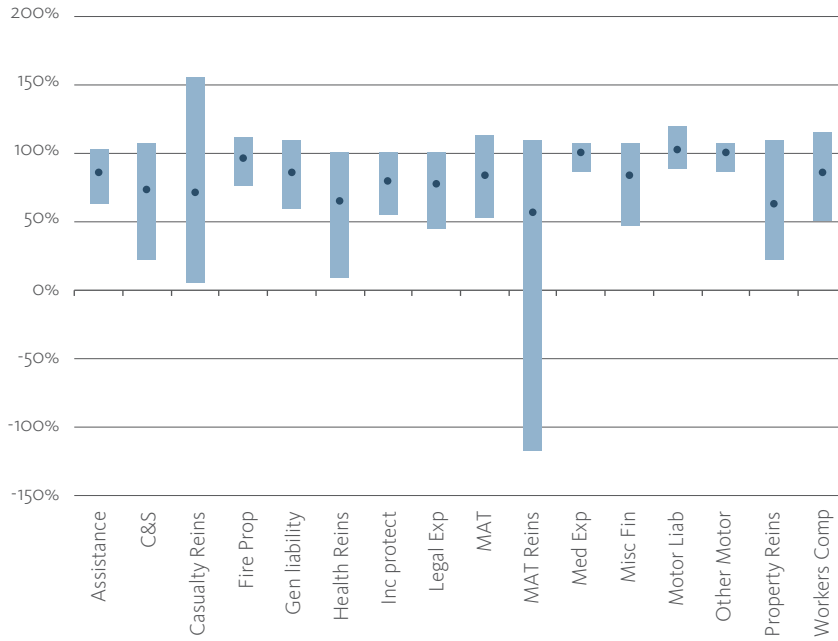
Figure 16: Share of reinsurance per LOB

'Credit & Suretyship' LOB displays the highest median value at just under 45% and the largest interquartile range.
 Inc protect, Legal exp, Med exp, Other Motor and Workers' Comp all display median values below 10%.



Defined as the percentage of GWP ceded to reinsurers. The chart shows interquartile range and median.

Figure 17: Combined ratio per line of business



'MAT Reins' has the lowest median combined ratio value at just above 50%, followed by Property and Health Reinsurance LOB.

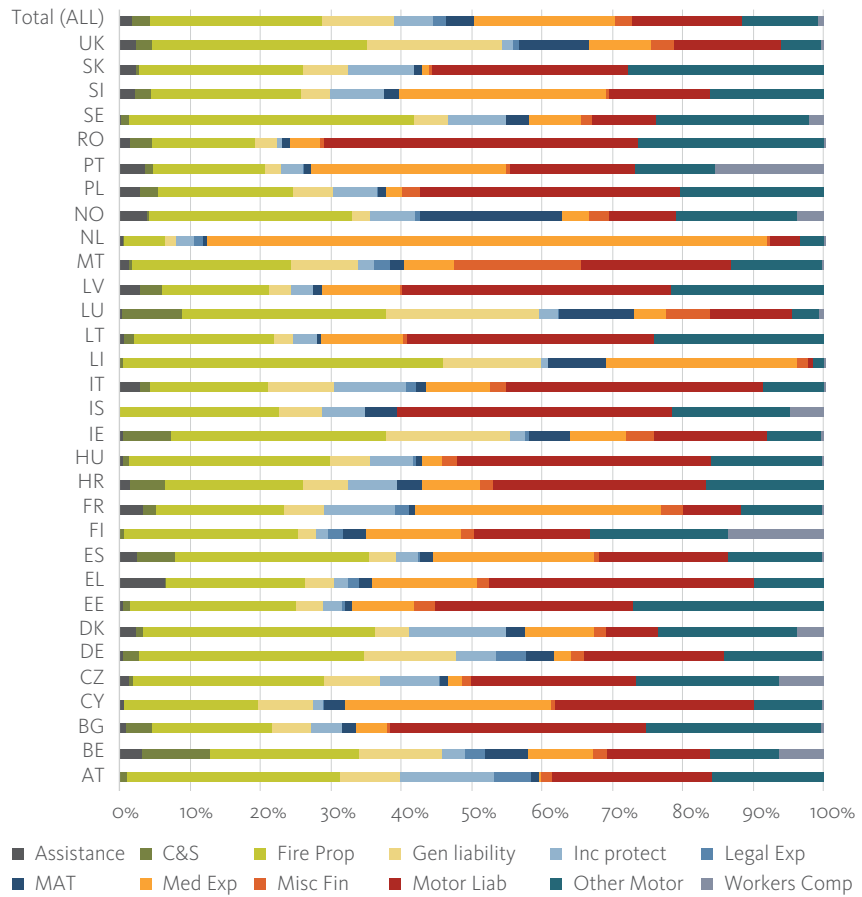
'Motor Liab' is the only line of business with a median value above 100%. 'Other Motor' & 'Med Exp' sit just below 100%.

Defined as sum of claims and expenses divided by premiums earned for each line of business. The chart shows interquartile range and median.

3.2 NON-LIFE LINES OF BUSINESS

Figure 18: Non-Life – Line of business split per country based on GWP

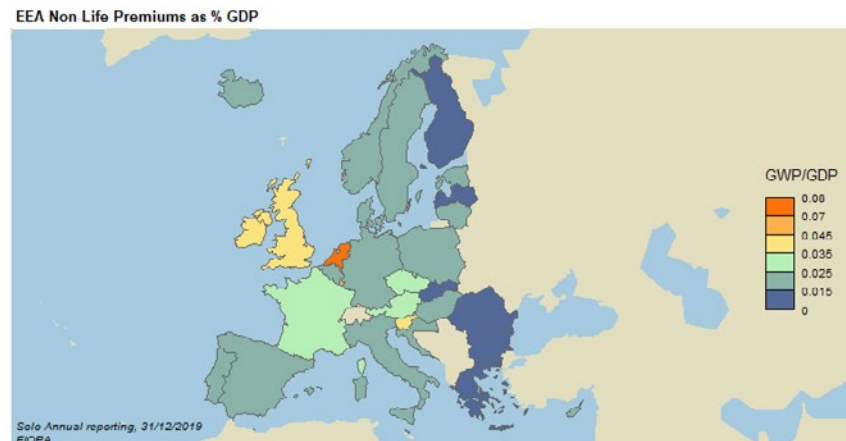
- At EEA level the most dominant Non-life line of business is fire and other damage to property, followed by medical expense and motor vehicle liability.
 - NL is the most concentrated Non-life market with medical expense insurance accounting for ~80% of GWP.



3.3 NON-LIFE – EEA PREMIUM BREAKDOWN

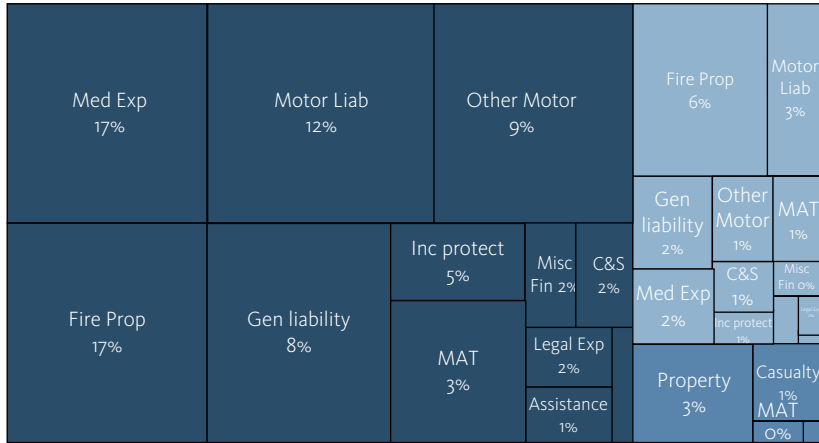
Figure 19: Non-Life – EEA Gross Written premium

- NL (~7.5%) and MT (~6%) have the highest GWP/GDP ratio.



The location of underwriting for any Non-life business written by all undertaking and their EEA branches, including by FOE and FPS, within the EEA.

Figure 20: Non-Life – Lines of Business by premium volume



- 'Med Exp', 'Fire Prop', 'Motor Liab' & 'Other Motor' account for over 55% of business in the non-life market.
 - Non-Prop Health reinsurance (0.2%) and Prop Worker's Comp reinsurance (0.1%) are not visible in the chart.

- Direct Business
- Proportional Reinsurance
- Non-Proportional Reinsurance

The total non-life market split into lines of business by premium volume. Split between direct business, proportional reinsurance and non-proportional reinsurance displayed.

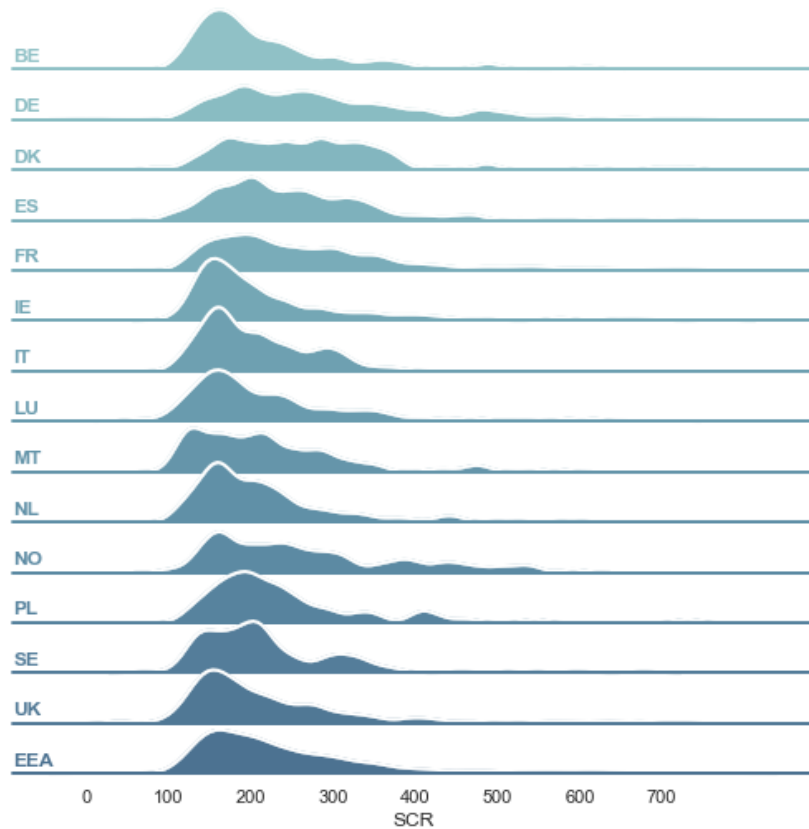
4. SOLVENCY & CAPITALISATION

The majority of countries (17 out of 31), report a median SCR ratio of over 200%; and for all countries a median MCR above 250% is reported. Market risk is the most dominant risk module accounting for between 25% and 80% of BSCR for all countries. For the majority of countries (26 out of 31), Tier 1 – unrestricted capital accounts for 90% or more of OF.

4.1 SCR AND MCR DISTRIBUTION

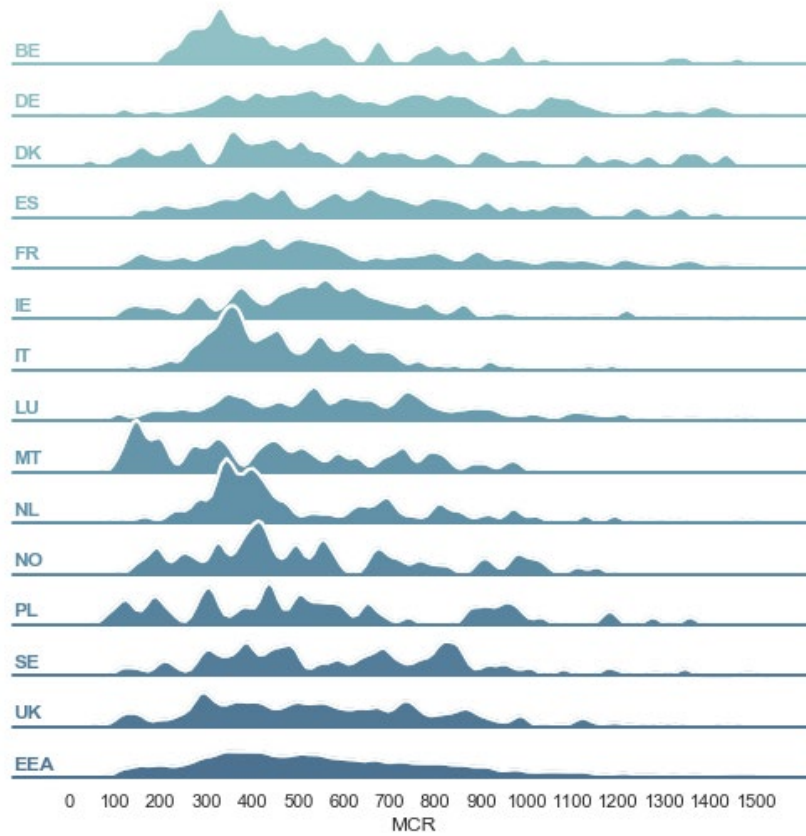
Figure 21: SCR ratio full distributions per country

- For most countries the majority of undertakings are concentrated within the 100-200% range with a long tail to the higher coverage ratios.
- At EEA level we can see that the vast majority of undertakings fall between the 100-300% range.



The chart above shows the distribution of SCR ratios for each country; that is the total eligible own funds divided by the Solvency capital requirement for each country. Countries with more than 55 undertakings displayed on their own line.

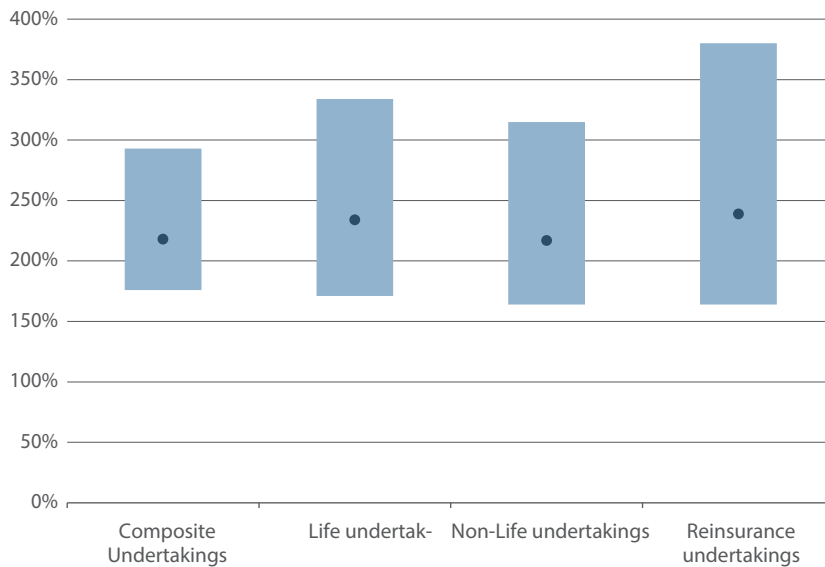
Figure 22: MCR ratio full distributions per country



- Distributions of MCR ratios are far more erratic than for SCR with some undertakings maintaining extremely high ratios.
- At EEA level this effect is smoothed showing a peak concentration between 300-500%.

The chart above shows the distribution of MCR ratios for each country; that is the total eligible own funds divided by the Minimum capital requirement for each country. Countries with more than 55 undertakings displayed on their own line.

Figure 23: SCR distributions by company type



- For all company types a median value above 200% is observed and 25th percentile value above 150%.

The following figures display the SCR coverage ratios by company type and below, the SCR & MCR distributions by country. The charts show interquartile range and median.

Figure 24: SCR coverage interquartile range

- DE displays the highest SCR coverage distributions with median values of ~300% and lower quartile values above 200%.
- LV is the only country reporting a median value of under 150%.
- The vast majority of countries (27) have a median value between 150% & 250%.

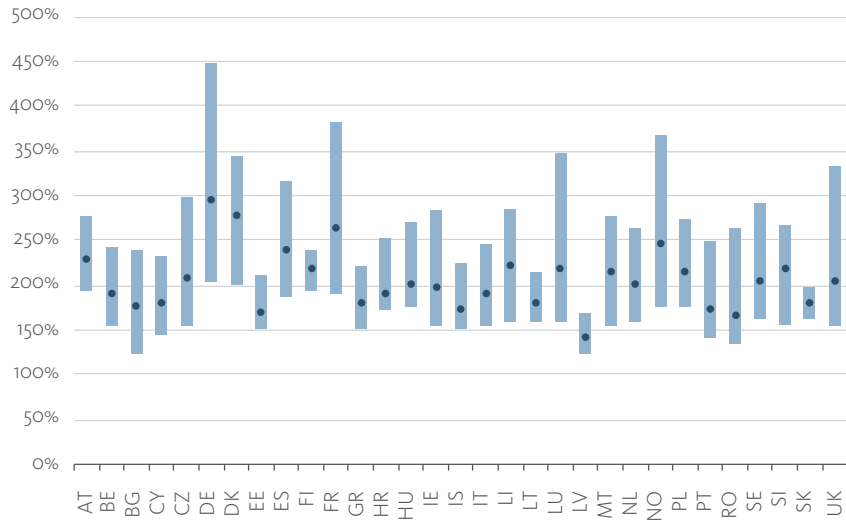
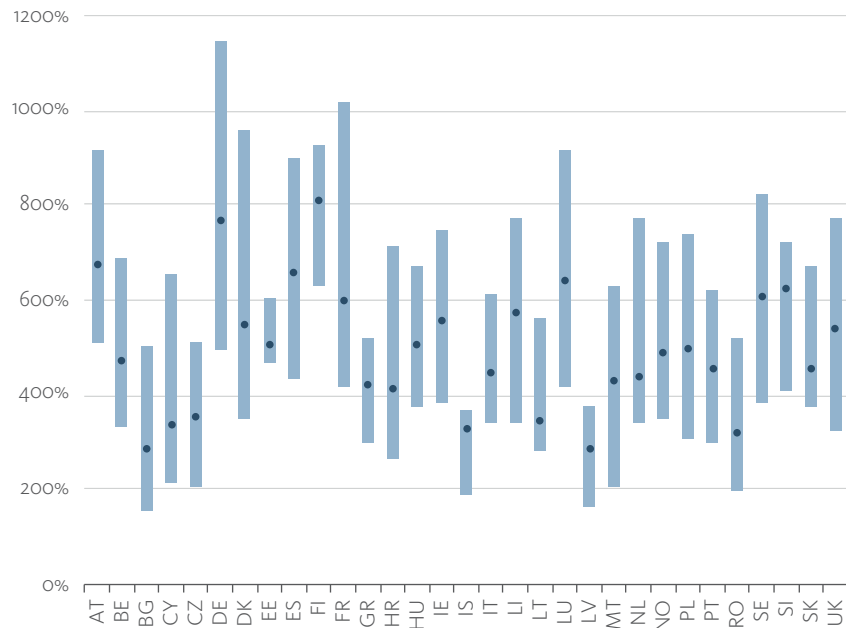


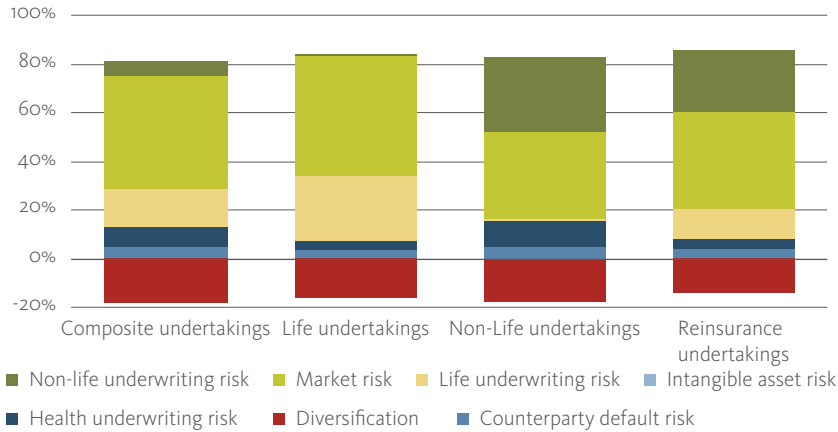
Figure 25: MCR coverage interquartile range

- FI have the highest median MCR coverage value at >800%
- BG & LV are the only countries with median values below 300%.



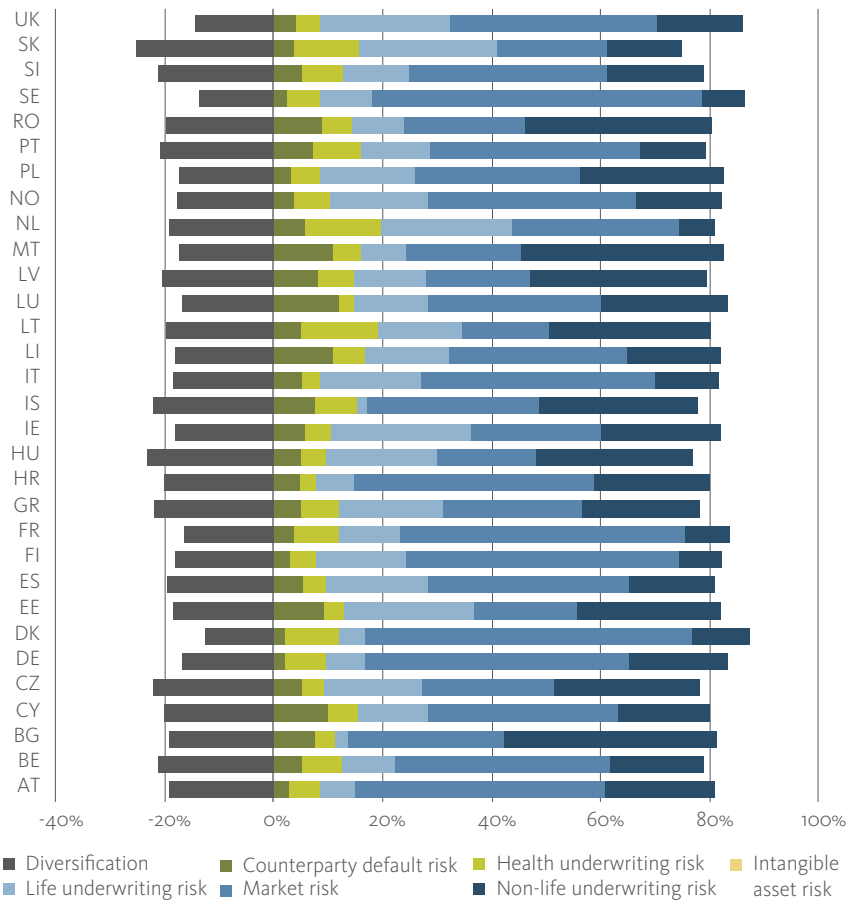
4.2 BSCR COMPOSITION – STANDARD FORMULA USERS

Figure 26: BSCR composition by module for standard formula users by business type



The aggregated value of the Solvency Risk Modules for Standard Formula users by company type.

Figure 27: BSCR composition by module for standard formula users by country.



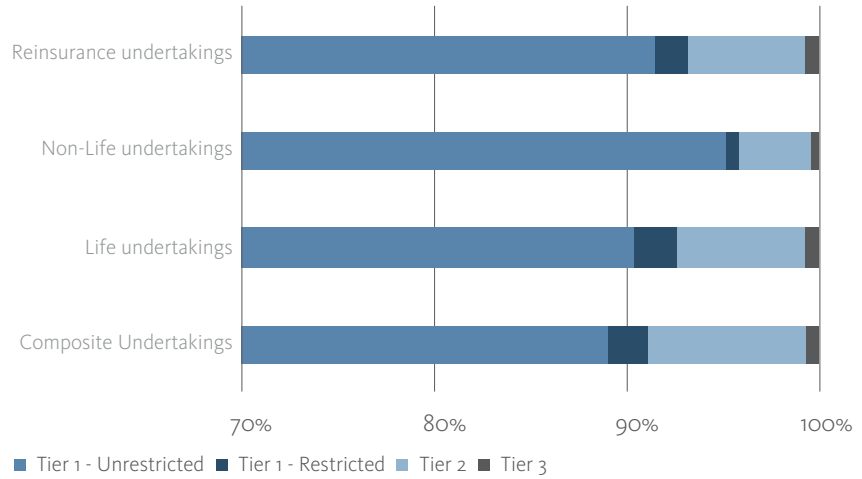
- The most prominent non underwriting related risk is market risk accounting for between 20% and 55% of BSCR.

- Diversification varies between ~15% for some countries up to ~25% for others. SK & HU have the highest value whilst DK, SE & UK have the lowest.

The aggregated value of the Solvency Risk Modules for Standard Formula users by country. Diversification represents the benefits in capital required after aggregating the risk modules and submodules with the prescribed standard correlation matrixes.

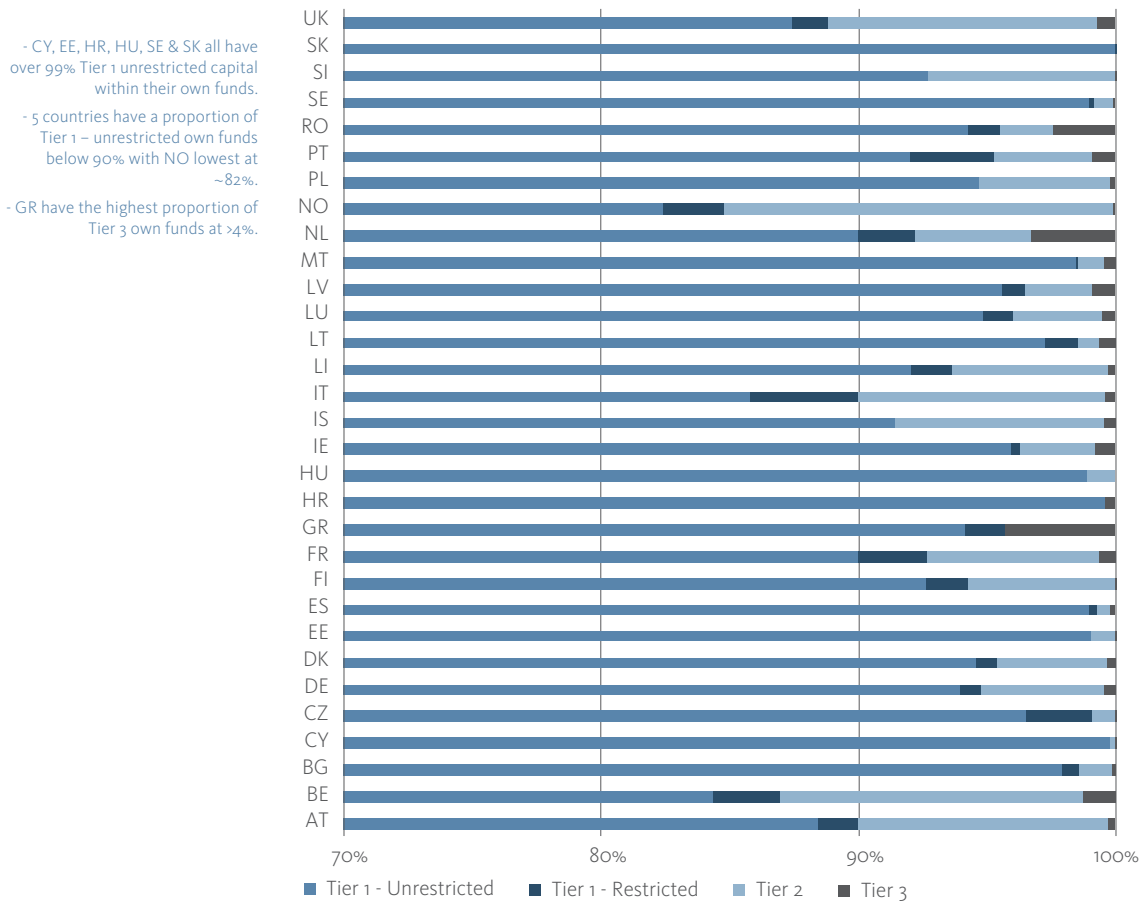
4.5 TIERING OF OWN FUNDS

Figure 28: Tiering of own funds EEA by business type



Shows the breakdown of eligible own funds to meet the SCR into the tiers of own funds which it consists of.

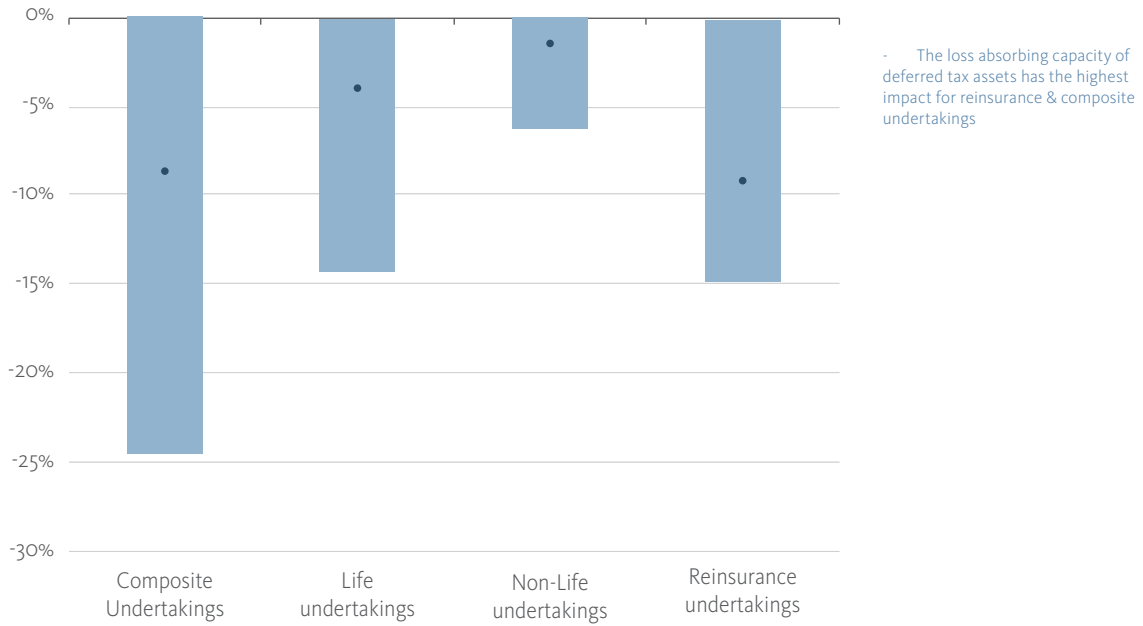
Figure 29: Tiering of own funds by country



Shows the breakdown of eligible own funds to meet the SCR into the tiers of own funds which it consists of.

4.4 IMPACT OF LOSS ABSORBING CAPACITY OF DEFERRED TAXES (LAC DT) AND EXPECTED PROFITS INCLUDED IN FUTURE PREMIUMS (EPIFP)

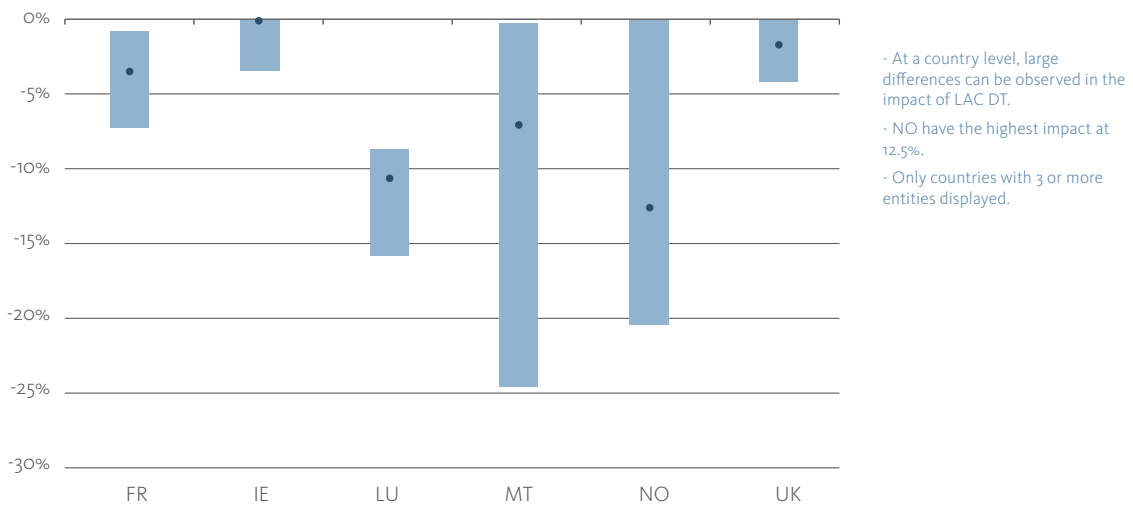
Figure 30: Impact of LAC DT by business type



- The loss absorbing capacity of deferred tax assets has the highest impact for reinsurance & composite undertakings

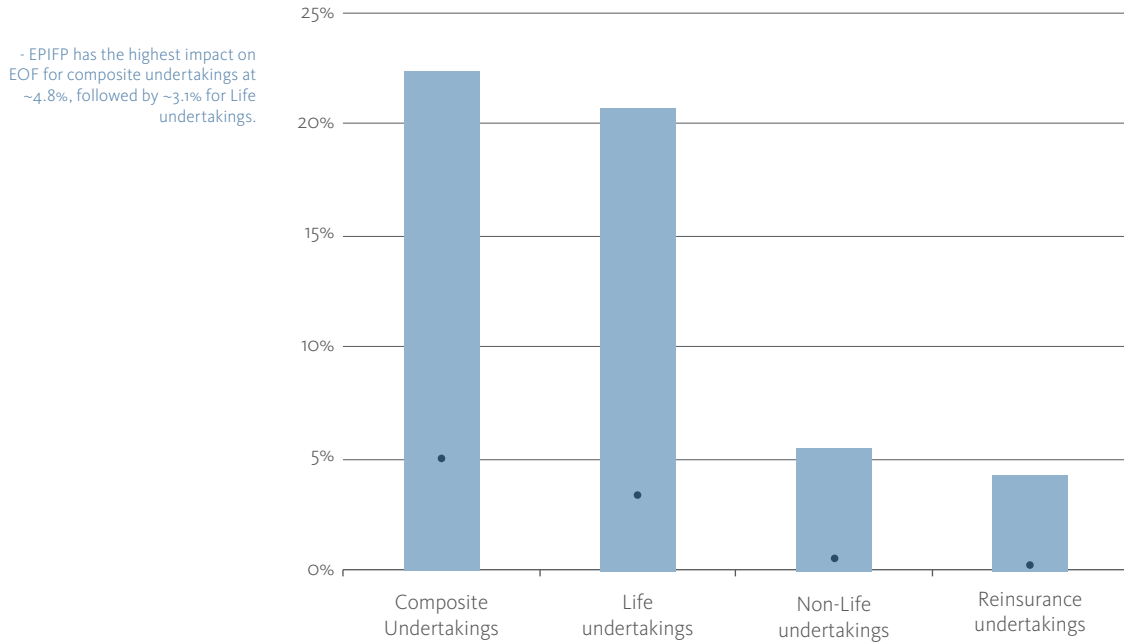
Loss absorbing capacity of deferred tax assets expressed as a percentage of the eligible own funds to meet the Solvency Capital Requirement by company type. The chart shows interquartile range and median

Figure 31: Impact of LAC DT by country



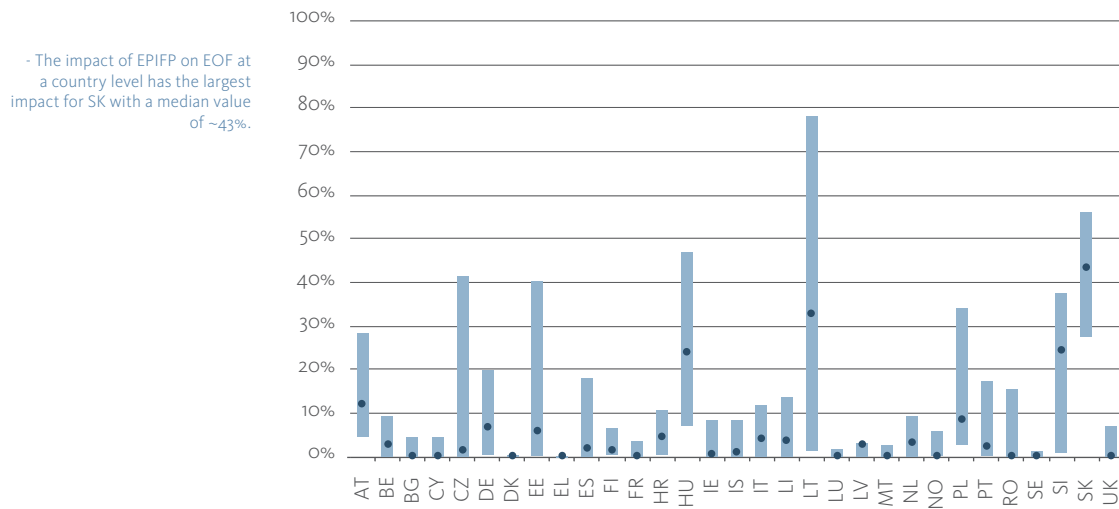
- At a country level, large differences can be observed in the impact of LAC DT.
- NO have the highest impact at 12.5%.
- Only countries with 3 or more entities displayed.

Figure 32: Impact of EPIFP by business type



The expected profit in future premiums expressed as a percentage off the eligible own funds to meet the Solvency Capital Requirement by country. Standard formula users only. The chart shows interquartile range and median

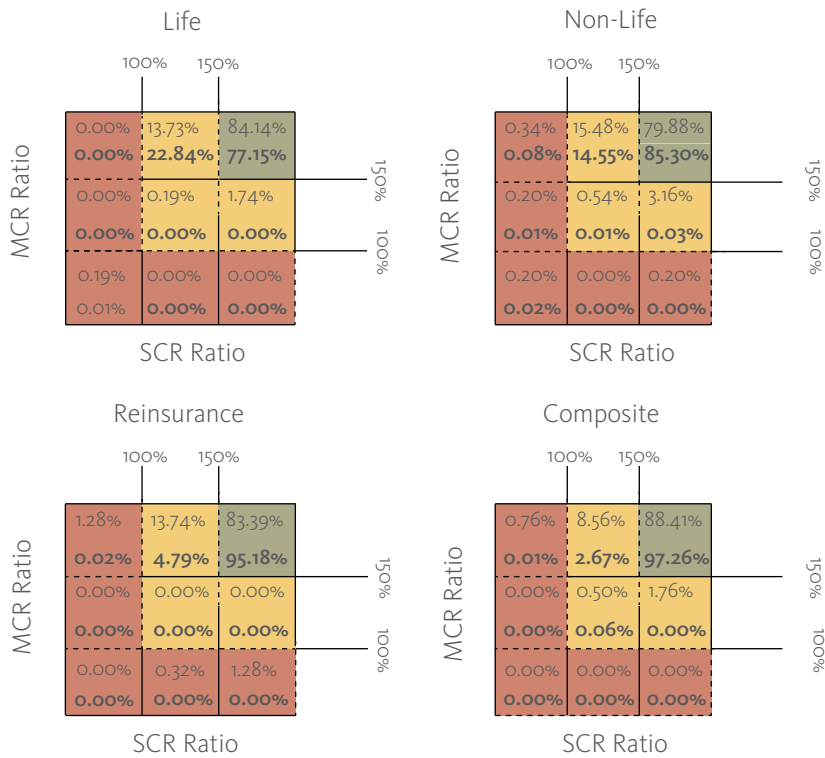
Figure 33: Impact of EPIFP by country



The expected profit in future premiums expressed as a percentage off the eligible own funds to meet the Solvency Capital Requirement by country. The chart shows interquartile range and median

4.5 SCR AND MCR COVERAGE

Figure 34: SCR and MCR Ratio, by business type



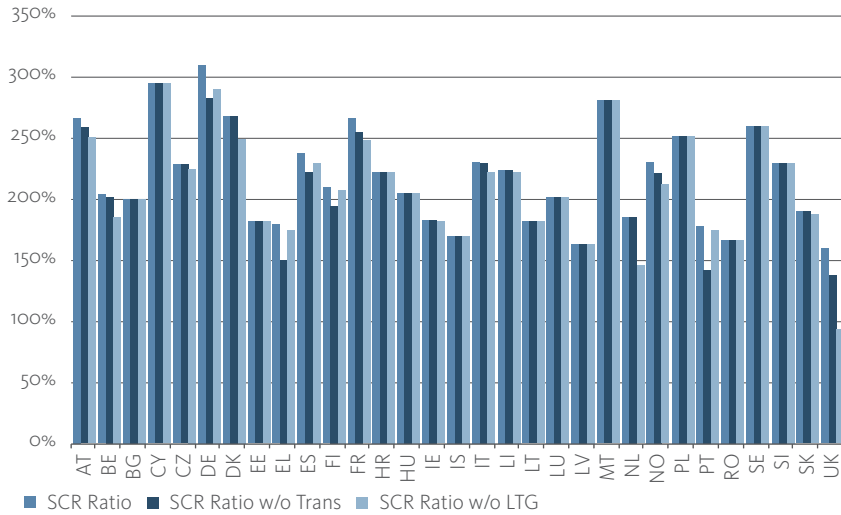
- Composite & reinsurance undertakings are the best covered type of undertaking with >95% of companies, in terms of total assets, above 150% for each metric.

The figures above display the capitalisation of companies when split out into different groupings. The thresholds are set at 100% and 150% coverage for both SCR and MCR. The green area denotes companies who are above 150% in each, yellow shows companies between 100% and 150% in one or both categories, and the red areas denote a company with less than 100% in one or both categories. The first figure in each cell is the share in terms of number of companies, the second bold figure is in terms of total assets.

4.6 LONG TERM GUARANTEES AND TRANSITIONAL MEASURES

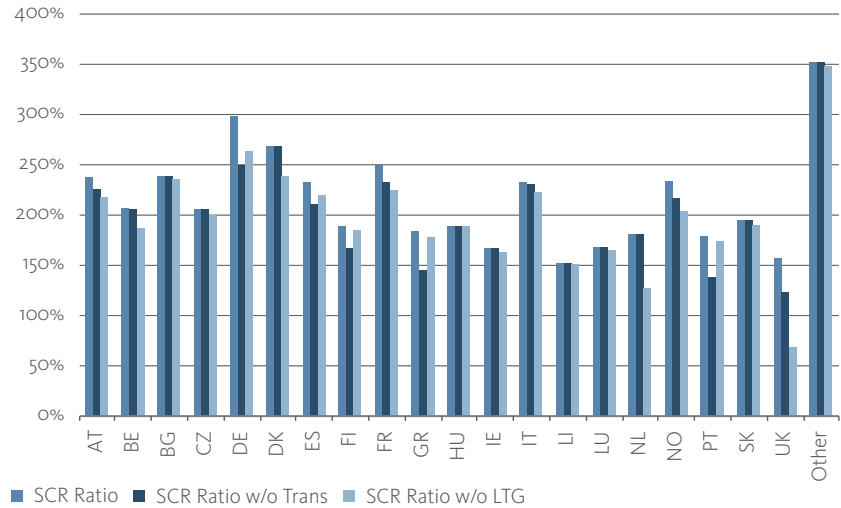
Figure 35: SCR ratio with & without Transitionals, LTG – all undertakings

- UK show the highest combined dependence on Transitionals and Long Term Guarantee measures with an impact of 23% and 67% respectively in terms of SCR ratio.
 - Transitionals have the highest impact for PT with a 36% drop in SCR ratio whilst Long Term Guarantee measures most impact UK SCR ratios by 67%.



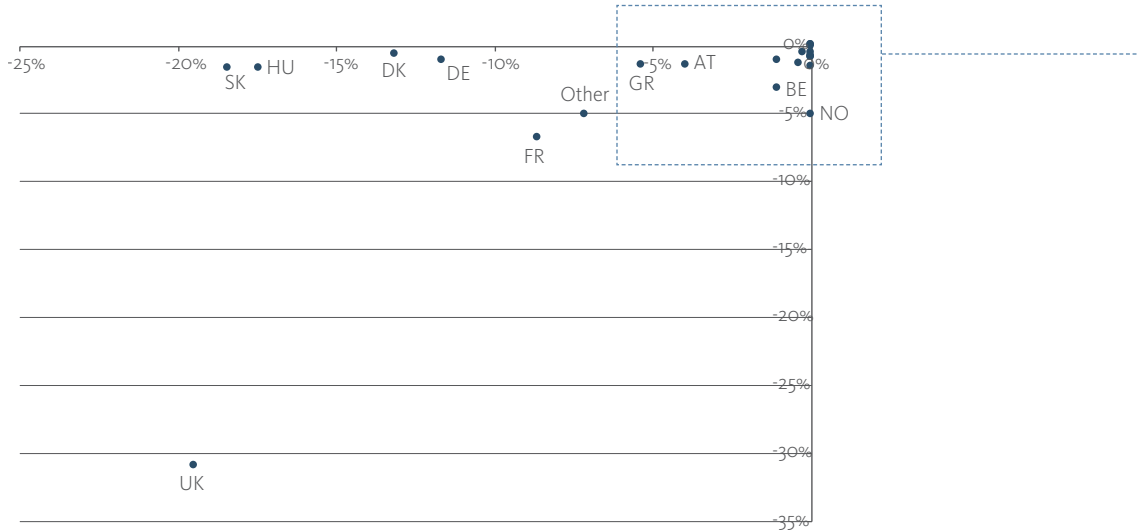
The SCR ratio calculated with & without the impact of transitionals and long term guarantees, respectively. Sample includes all undertakings irrespective of whether or not they use any of the measures.

Figure 36: SCR ratio with & without Transitionals, LTG – For undertakings that use at least one measure

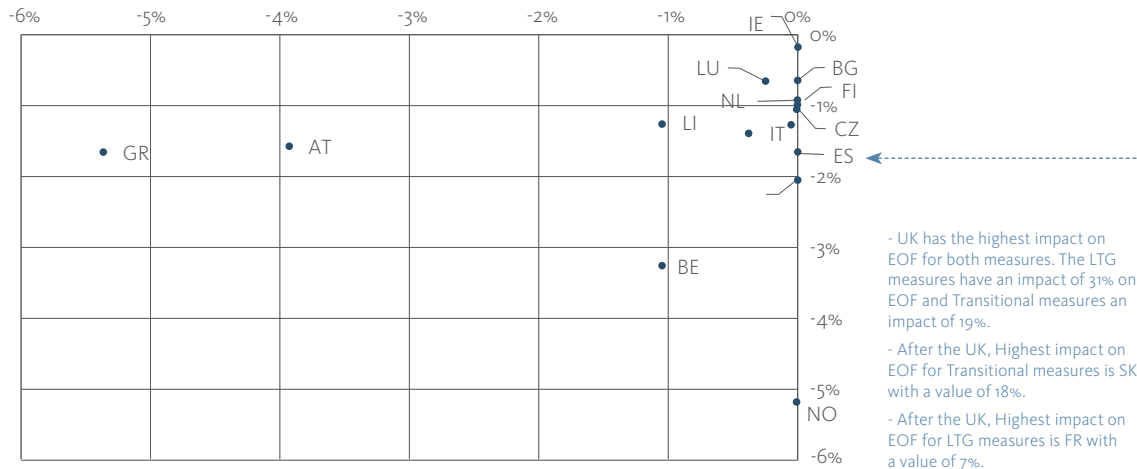


The SCR ratio calculated with & without the impact of transitionals and long term guarantee measures, respectively. Sample includes undertakings who use at least one of the measures.

Figure 37: Impact of transitionals and LTG measures per country on Eligible own funds to meet the SCR.



The impact of transitionals and impact of long term guarantee measures are calculated as a percentage of the Eligible own funds to meet the SCR. Sample includes life undertakings who use at least one of the measures.



- UK has the highest impact on EOF for both measures. The LTG measures have an impact of 31% on EOF and Transitional measures an impact of 19%.
- After the UK, Highest impact on EOF for Transitional measures is SK with a value of 18%.
- After the UK, Highest impact on EOF for LTG measures is FR with a value of 7%.

5. INVESTMENTS

In terms of insurance sector asset types (by CIC codes), EEA investments are almost 60% attributed to Government and Corporate Bonds (CIC 1 & 2).

5.1 ASSET TYPE BREAKDOWN

Figure 38: Asset type allocation of reported assets (by CIC codes)

	Government bonds	Corporate bonds	Equity	Investment funds Collective Investment Undertakings	Structured notes	Collateralised securities	Cash and deposits	Mortgages and loans	Property	Other investments
	1	2	3	4	5	6	7	8	9	0
1	22.0%	17.8%	10.5%	3.3%	0.1%	0.0%	0.2%	1.2%	1.2%	
	Central Government bonds	Corporate bonds	Common equity	Equity funds	Equity risk	Equity risk	Cash	Uncollateralized loans made	Property (office and commercial)	
2	1.7%	0.0%	1.3%	8.2%	0.8%	0.1%	1.2%	0.3%	0.3%	
	Supra-national bonds	Convertible bonds	Equity of real estate related corporation	Debt funds	Interest rate risk	Interest rate risk	Transferable deposits (cash equivalents)	Loans made collateralized with securities	Property (residential)	
3	2.1%	0.1%	0.0%	2.2%	0.0%	0.0%	0.4%		0.3%	
	Regional government bonds	Commercial paper	Equity rights	Money market funds	Currency risk	Currency risk	Other deposits short term (less than or equal to one year)		Property (for own use)	
4	0.4%	0.3%	0.1%	1.1%	0.1%	0.3%	0.2%	2.8%	0.0%	
	Municipal government bonds	Money market instruments	Preferred equity	Asset allocation funds	Credit risk	Credit risk	Other deposits with term longer than one year	Mortgages	Property (under construction)	
5	0.4%	0.5%		1.8%	0.0%	0.1%	2.2%	0.3%	0.1%	
	Treasury bonds	Hybrid bonds		Real estate funds	Real estate risk	Real estate risk	Deposits to cedants	Other collateralized loans made	Plant and equipment (for own use)	
6	0.0%	1.2%		0.4%	0.0%	0.0%		0.1%		
	Covered bond	Common covered bonds		Alternative funds	Commodity risk	Commodity risk		Loans on policies		
7	0.0%	4.2%		0.6%	0.0%	0.0%				
	National Central Banks	Covered bonds subject to specific law		Private equity funds	Catastrophe and Weather risk	Catastrophe and Weather risk				
8		1.2%		0.4%	0.0%	0.0%				
		Subordinated bonds		Infrastructure funds	Mortality risk	Mortality risk				
9	1.3%	0.7%	0.6%	1.9%	0.1%	0.0%	0.1%	0.5%	0.1%	0.2%
	Other	Other	Other	Other	Other	Other	Other	Other	Other	Other
Total	28.0%	26.2%	12.5%	19.9%	1.1%	0.6%	4.3%	5.3%	2.0%	0.2%

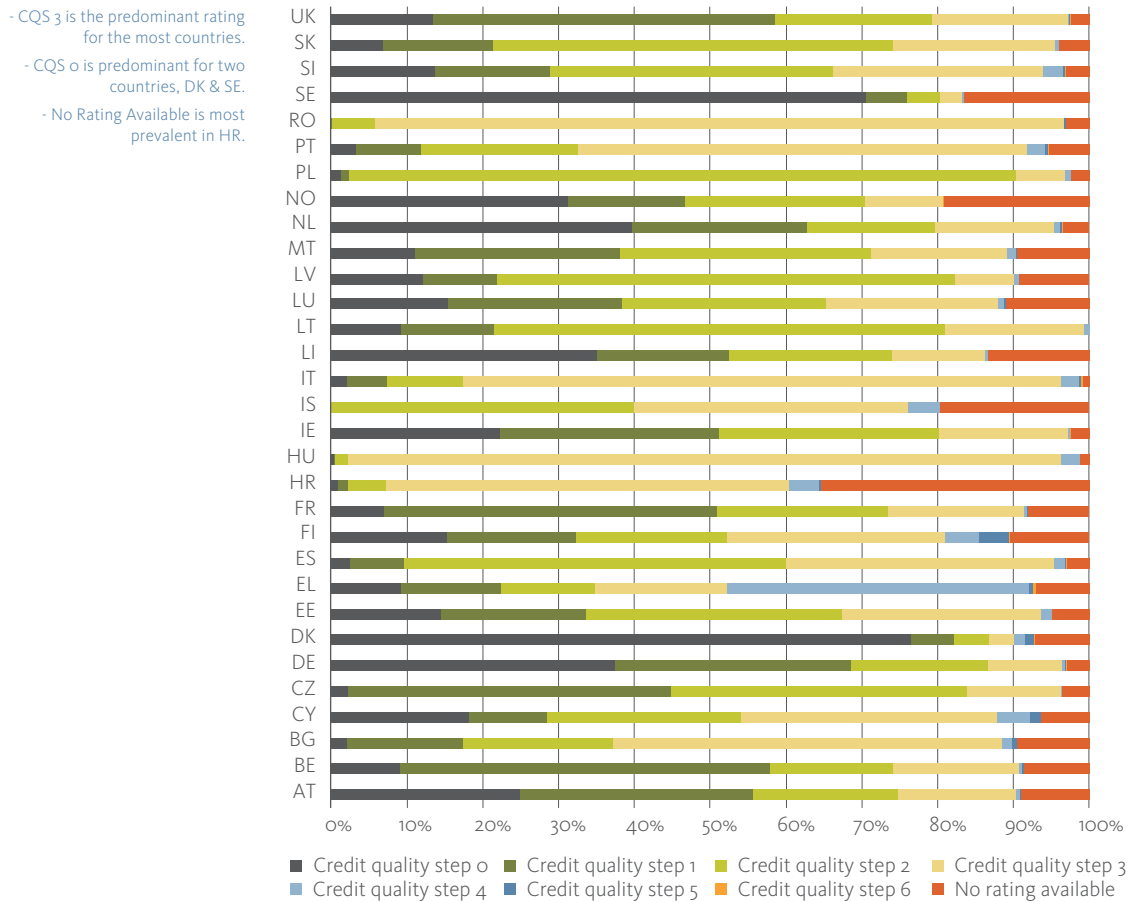
- Almost 60% of assets fall into the CIC categories: Government bonds (1) and Corporate bonds (2). Investment funds collective investment undertakings (4) and Equity (3) follow with ~20% and ~13% reported respectively.

- Within the most prevalent CIC categories, Government & Corporate bonds, we can see that the CIC subcategories Central Government bonds (1.1) and Corporate bonds (2.1) account for ~22% and ~18% respectively.

CIC Code prevalence amongst reported assets. Non index-linked/unit-linked.
The Complementary Identification Code (CIC) is a set of industry standard codes for identifying the specific type of financial instrument under Solvency II. In the visualisation below the prevalence of instrument type is displayed.

5.2 CREDIT QUALITY

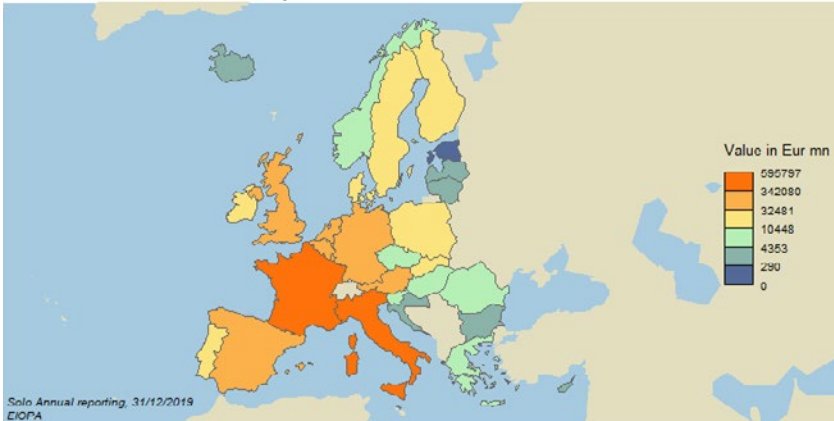
Figure 39: Credit Quality Step allocation of reported assets



Credit Quality Step reported for relevant assets (CIC: 1, 2, 5, 6). Allocation by country. Standard Formula users only. Credit Quality Step (CQS) is a standardised scale of credit quality with mappings to the credit ratings of the largest ratings agencies. CQS 0-3 correspond to investment grade assets with 4-6 being non-investment grade.

5.3 LOCATION OF INVESTMENTS

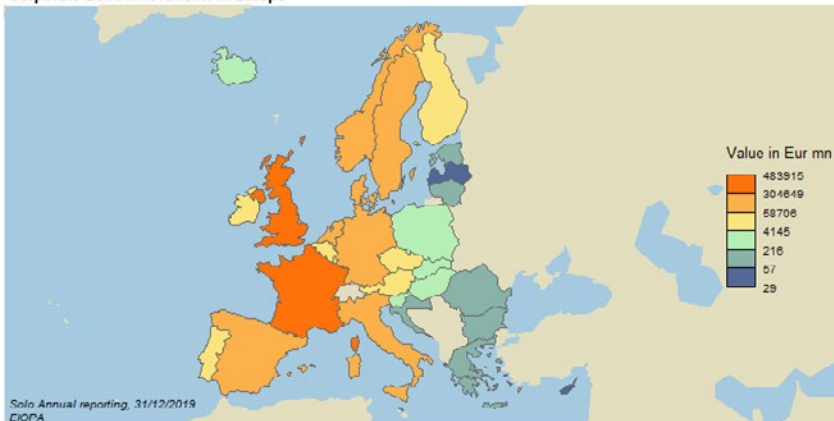
Government Bond investments in Europe



The location of investment for all Government Bonds, excluding those held for unit-linked or index-linked portfolios, i.e. where CIC main category is equal to 1.

Figure 41: Issuer country for EU Corporate bond holdings

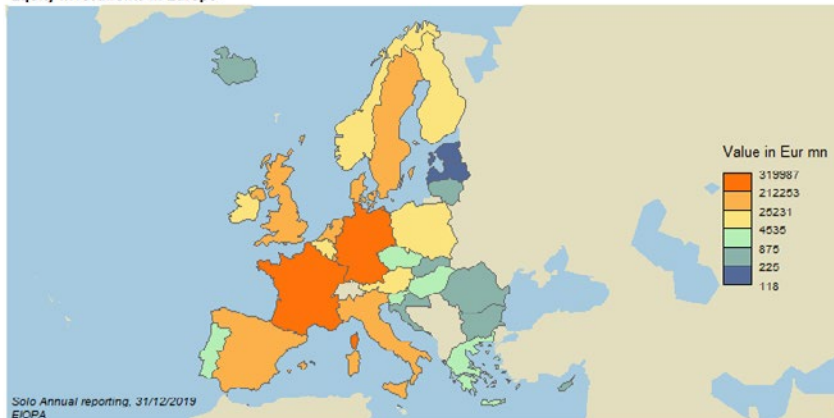
Corporate Bond investments in Europe



The location of investment for all Corporate Bonds, excluding those held for unit-linked or index-linked portfolios, i.e. where CIC main category is 2.

Figure 42: Issuer country for EU Equity holdings

Equity investments in Europe



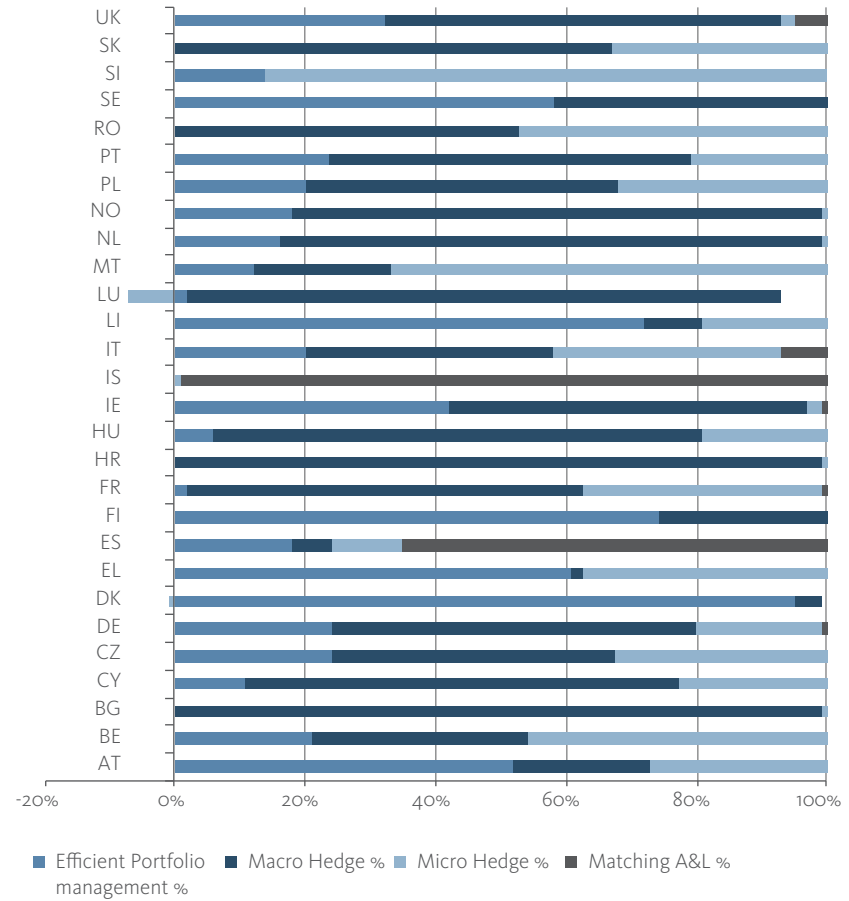
The location of investment for all Equity, excluding those held for unit-linked or index-linked portfolios, i.e. where CIC main category is 3.

- Of those government bonds held by (re)insurance undertakings and issued in Europe, FR and IT together account for 45%. The top 5 issuers of government bonds (FR, DE, IT, ES & UK) together amount to >75% of the total.
- Of those corporate bonds held by (re)insurance undertakings and issued in Europe, FR and UK together account for ~43%.
- Of the equity held by (re) insurance undertakings and issued in Europe, FR and DE together account for 50%.

5.4 USE OF DERIVATIVES

Figure 43: Purpose of derivatives by country

- The most common use of derivatives is for Macro hedging.



The nominal value of derivatives for each purpose divided as a percentage of the total nominal derivative value.

5.5 SECTOR DISTRIBUTION

Figure 44: Sector allocation of reported assets (by NACE codes)

NACE Sector/Subsector	AT	BE	BG	CY	CZ	DE	DK	EE	EL	ES	FI	FR	HR	HU	IE	IS	
Blank	10.0%	10.7%	9.6%	14.8%	3.9%	7.1%	1.8%	1.9%	8.3%	5.9%	6.0%	3.6%	13.1%	4.2%	13.1%	3.7%	
A - Agriculture, forestry and fishing	0.0%	0.1%	0.0%	0.0%	0.0%	0.0%	0.0%	0.1%	0.0%	0.0%	0.0%	0.0%	0.0%	0.0%	0.0%	0.1%	0.5%
B - Mining and quarrying	0.3%	0.3%	0.6%	1.5%	0.4%	0.2%	0.2%	0.4%	0.3%	0.3%	0.3%	0.5%	0.0%	0.0%	0.0%	0.5%	0.0%
C - Manufacturing	2.7%	5.0%	3.0%	3.0%	2.1%	1.5%	1.7%	8.9%	3.2%	2.5%	11.6%	5.7%	0.7%	0.1%	7.2%	3.8%	
D - Electricity, gas, steam and air conditioning supply	1.3%	2.3%	0.9%	1.2%	2.3%	0.7%	1.2%	2.9%	1.4%	2.2%	1.6%	2.3%	0.1%	0.1%	1.8%	3.0%	
E - Water supply; sewerage; waste management and remediation activities	0.1%	0.7%	0.0%	0.0%	0.1%	0.1%	0.0%	0.3%	0.2%	0.2%	0.3%	0.5%	0.0%	0.0%	0.2%	0.0%	
F - Construction	0.7%	1.0%	0.1%	0.9%	0.2%	0.2%	0.1%	0.4%	0.6%	0.6%	0.3%	0.5%	0.3%	0.0%	0.3%	0.0%	
G - Wholesale and retail trade; repair of motor vehicles and motorcycles	0.1%	0.5%	0.3%	1.2%	0.1%	0.1%	0.3%	0.1%	0.4%	0.9%	0.7%	2.1%	0.0%	0.0%	0.9%	3.6%	
H - Transporting and storage	1.6%	1.6%	0.9%	0.4%	0.3%	0.6%	0.3%	1.5%	0.8%	0.9%	0.7%	2.8%	0.4%	0.0%	1.2%	0.3%	
I - Accommodation and food service activities	0.2%	0.2%	0.0%	0.0%	0.1%	0.0%	0.1%	0.0%	0.1%	0.1%	0.2%	0.6%	0.0%	0.0%	0.3%	0.0%	
J - Information and communication	1.2%	2.1%	0.9%	2.1%	1.1%	0.6%	0.7%	2.2%	1.8%	3.3%	2.7%	0.3%	0.1%	2.8%	1.6%	1.6%	
K64.1.1 - Central banking	0.0%	0.0%	0.5%	0.6%	0.1%	0.0%	1.1%	0.0%	1.2%	0.1%	0.0%	0.1%	0.0%	8.9%	1.1%	14.1%	
K64.1.9 - Other monetary intermediation	16.7%	7.0%	14.2%	27.4%	15.8%	20.1%	19.1%	42.0%	11.0%	12.0%	20.3%	12.4%	6.3%	6.2%	18.6%	24.6%	
K64.2.0 - Activities of holding companies	3.2%	3.2%	1.6%	0.2%	1.3%	11.0%	0.7%	0.9%	0.1%	1.1%	0.6%	2.2%	0.4%	0.2%	2.2%	7.5%	
K64.3.0 - Trusts, funds and similar financial entities	6.5%	4.3%	2.5%	9.3%	2.1%	6.8%	25.9%	3.1%	5.3%	13.9%	10.8%	0.4%	4.2%	6.5%	3.8%	3.8%	
K64.9.1 - Financial leasing	0.1%	0.5%	0.6%	0.5%	0.1%	0.3%	0.0%	0.1%	0.0%	0.1%	0.1%	1.2%	0.0%	0.2%	1.0%	0.0%	
K64.9.2 - Other credit granting	0.3%	1.3%	0.1%	0.4%	0.1%	1.0%	8.5%	1.8%	0.2%	0.4%	0.9%	0.5%	0.0%	0.3%	2.5%	2.8%	
K64.9.9 - Other financial service activities, except insurance and pension funding n.e.c.	1.8%	1.5%	0.4%	0.3%	0.2%	4.0%	0.4%	5.0%	0.6%	1.6%	1.3%	2.8%	0.5%	1.2%	3.4%	9.5%	
K65.1.1 - Life insurance	6.3%	1.0%	1.5%	5.1%	2.1%	2.1%	1.8%	0.9%	0.3%	1.6%	0.7%	2.0%	0.9%	0.3%	2.0%	3.9%	
K65.1.2 - Non-life insurance	3.0%	1.1%	3.2%	0.6%	2.7%	2.7%	0.2%	0.2%	2.2%	1.2%	1.5%	2.0%	0.4%	1.2%	2.1%	2.1%	
K65.2.0 - Reinsurance	0.7%	0.2%	0.0%	0.3%	0.2%	1.5%	0.1%	0.0%	0.0%	0.1%	0.1%	1.5%	0.9%	0.0%	3.5%	0.0%	
K65.3.0 - Pension funding	0.0%	0.0%	0.1%	0.0%	0.3%	0.0%	1.3%	0.0%	0.0%	0.0%	0.0%	0.0%	0.0%	0.1%	0.0%	0.0%	
K66.1.1 - Administration of financial markets	0.1%	0.1%	0.0%	0.0%	0.0%	0.1%	11.1%	0.0%	0.0%	0.0%	0.1%	0.1%	0.0%	0.0%	0.1%	0.0%	
K66.1.2 - Security and commodity contracts brokerage	0.4%	0.1%	0.6%	0.3%	1.4%	0.2%	0.9%	0.3%	0.2%	1.1%	0.5%	0.6%	0.0%	0.0%	0.5%	0.9%	
K66.1.9 - Other activities auxiliary to financial services, except insurance and pension funding	0.2%	0.8%	0.6%	0.3%	0.2%	0.4%	0.3%	0.4%	0.1%	0.2%	3.4%	1.1%	0.1%	0.2%	0.9%	0.2%	
K66.2.1 - Risk and damage evaluation	0.1%	0.0%	0.0%	0.0%	0.0%	0.2%	0.0%	0.1%	0.0%	0.0%	0.0%	0.0%	0.0%	0.0%	0.0%	0.0%	
K66.2.2 - Activities of insurance agents and brokers	3.5%	0.0%	0.0%	0.1%	0.1%	0.0%	0.0%	0.0%	0.0%	0.2%	0.1%	0.1%	0.0%	0.6%	0.1%	0.0%	
K66.2.9 - Other activities auxiliary to insurance and pension funding	0.0%	0.1%	0.0%	0.0%	0.0%	0.7%	0.0%	0.1%	0.4%	1.8%	0.1%	0.0%	0.0%	0.0%	0.0%	0.0%	
K66.3.0 - Fund management activities	14.0%	1.6%	3.1%	14.5%	5.5%	19.1%	9.4%	1.6%	4.1%	10.8%	6.8%	4.5%	2.7%	4.1%	4.2%	4.2%	
L - Real estate activities	3.7%	4.6%	5.8%	2.9%	5.1%	2.5%	4.4%	3.2%	0.9%	1.0%	3.5%	4.0%	1.1%	1.5%	1.3%	7.5%	
M - Professional, scientific and technical activities	0.8%	0.5%	0.1%	0.2%	0.0%	0.6%	0.1%	0.6%	0.2%	0.1%	4.3%	0.9%	3.6%	0.0%	0.3%	0.1%	
N - Administrative and support service activities	0.2%	0.3%	0.1%	0.9%	0.4%	0.2%	0.2%	0.6%	0.1%	0.2%	0.9%	0.2%	0.1%	0.0%	0.3%	0.0%	
O - Public administration and defence; compulsory social security	19.5%	47.0%	46.9%	10.8%	11.1%	14.9%	8.7%	20.0%	55.0%	56.6%	8.7%	31.4%	60.3%	68.3%	22.6%	2.1%	
P - Education	0.0%	0.0%	0.0%	0.0%	0.0%	0.0%	0.0%	0.0%	0.0%	0.0%	0.0%	0.0%	0.0%	0.0%	0.0%	0.0%	
Q - Human health and social work activities	0.2%	0.2%	0.1%	0.0%	0.0%	0.1%	0.0%	0.0%	0.1%	0.2%	1.2%	0.3%	0.1%	0.0%	0.1%	0.0%	
R - Arts, entertainment and recreation	0.0%	0.0%	0.3%	0.0%	0.0%	0.0%	0.0%	0.0%	0.2%	0.0%	0.1%	0.0%	0.0%	0.0%	0.0%	0.0%	
S - Other services activities	0.0%	0.1%	1.1%	0.0%	0.1%	0.1%	0.0%	0.0%	0.1%	0.3%	0.0%	0.1%	0.0%	0.0%	0.1%	0.0%	
T - Activities of households as employers; undifferentiated goods- and services- producing activities of households for own use	0.0%	0.0%	0.0%	0.0%	0.0%	0.0%	0.0%	0.0%	0.0%	0.0%	0.0%	0.0%	0.0%	0.0%	0.0%	0.0%	
U - Activities of extraterritorial organisations and bodies	0.1%	0.2%	0.0%	0.0%	0.0%	0.1%	0.0%	0.0%	0.0%	0.0%	0.1%	0.0%	0.0%	0.0%	0.2%	0.0%	

NACE Sector/Subsector	IT	LI	LT	LU	LV	MT	NL	NO	PL	PT	RO	SE	SI	SK	UK	EEA
Blank	1.9%	14.0%	4.3%	4.8%	4.0%	24.5%	12.5%	3.9%	2.1%	1.8%	7.2%	4.6%	5.2%	5.1%	5.0%	3.5%
A - Agriculture, forestry and fishing	0.1%	0.0%	0.0%	0.0%	0.0%	0.0%	0.0%	0.0%	0.0%	0.0%	0.0%	0.2%	0.0%	0.1%	0.0%	0.0%
B - Mining and quarrying	0.3%	0.4%	0.0%	1.7%	0.1%	0.3%	0.3%	0.3%	0.2%	1.4%	0.1%	0.3%	0.5%	0.6%	0.9%	0.4%
C - Manufacturing	4.2%	8.6%	0.3%	7.2%	1.4%	3.4%	4.5%	3.3%	0.5%	6.4%	0.2%	6.3%	8.8%	5.0%	7.1%	4.2%
D - Electricity, gas, steam and air conditioning supply	2.4%	1.1%	1.9%	2.4%	2.5%	1.4%	1.2%	3.8%	0.6%	3.6%	0.6%	0.7%	2.2%	3.0%	4.0%	2.0%
E - Water supply; sewerage; waste management and remediation activities	0.1%	0.2%	0.0%	0.3%	0.0%	0.1%	0.1%	0.1%	0.0%	0.3%	0.0%	0.1%	0.1%	0.0%	1.7%	0.4%
F - Construction	0.3%	0.1%	0.2%	0.3%	0.5%	0.1%	0.3%	0.3%	0.2%	0.6%	0.4%	0.4%	0.4%	1.7%	0.6%	0.4%
G - Wholesale and retail trade; repair of motor vehicles and motorcycles	0.3%	0.4%	0.3%	0.9%	0.3%	0.6%	0.6%	0.6%	0.1%	0.5%	0.1%	1.1%	0.9%	0.2%	1.4%	0.6%
H - Transporting and storage	1.1%	1.1%	0.9%	1.7%	0.7%	0.6%	1.0%	1.7%	0.1%	1.4%	0.1%	0.5%	1.3%	1.4%	3.6%	1.7%
I - Accommodation and food service activities	0.1%	0.1%	0.1%	0.2%	0.0%	0.2%	0.1%	0.1%	0.0%	0.3%	0.0%	0.1%	0.3%	0.1%	0.3%	0.2%
J - Information and communication	1.9%	3.0%	0.4%	2.6%	0.2%	1.7%	1.4%	1.8%	0.3%	2.4%	0.3%	1.8%	3.0%	1.7%	3.4%	1.9%
K64.1.1 - Central banking	0.1%	1.2%	0.0%	0.7%	0.3%	0.0%	0.1%	0.3%	0.0%	0.7%	0.4%	0.0%	2.3%	0.5%	0.2%	0.2%
K64.1.9 - Other monetary intermediation	7.1%	24.2%	11.4%	20.2%	17.1%	22.3%	17.0%	18.6%	15.3%	15.3%	15.5%	25.3%	13.8%	20.0%	10.6%	14.4%
K64.2.0 - Activities of holding companies	3.4%	1.5%	0.2%	1.4%	0.3%	1.5%	1.2%	0.9%	0.2%	0.4%	0.2%	2.7%	0.8%	0.6%	3.0%	4.5%
K64.3.0 - Trusts, funds and similar financial entities	3.6%	2.9%	3.3%	10.0%	1.4%	2.4%	5.5%	26.1%	0.2%	4.4%	0.2%	5.7%	4.2%	1.0%	16.6%	9.2%
K64.9.1 - Financial leasing	0.0%	0.4%	1.0%	0.2%	0.1%	0.0%	0.2%	0.2%	0.2%	0.7%	0.2%	0.1%	0.4%	0.4%	0.4%	0.2%
K64.9.2 - Other credit granting	0.0%	0.9%	1.5%	1.7%	0.0%	0.3%	0.7%	2.8%	0.3%	0.2%	0.2%	6.7%	0.2%	0.2%	0.7%	1.0%
K64.9.9 - Other financial service activities, except insurance and pension funding n.e.c.	3.2%	0.8%	1.4%	3.0%	1.3%	4.3%	6.5%	1.8%	0.3%	0.7%	2.0%	1.0%	1.0%	2.4%	2.5%	3.0%
K65.1.1 - Life insurance	4.3%	0.5%	0.9%	0.9%	0.0%	1.1%	0.9%	3.8%	11.0%	2.4%	4.1%	1.5%	2.3%	2.3%	1.7%	2.2%
K65.1.2 - Non-life insurance	1.6%	2.7%	0.0%	1.3%	0.0%	0.4%	1.3%	0.6%	1.4%	0.7%	0.5%	1.3%	0.4%	8.0%	1.0%	1.9%
K65.2.0 - Reinsurance	0.2%	2.9%	0.0%	2.9%	0.0%	0.0%	0.1%	0.0%	0.0%	0.1%	0.0%	0.0%	0.6%	0.4%	0.1%	1.0%
K65.3.0 - Pension funding	0.0%	0.0%	0.0%	0.0%	0.0%	0.0%	0.0%	0.0%	0.7%	0.0%	0.0%	0.0%	0.5%	0.2%	0.1%	0.1%
K66.1.1 - Administration of financial markets	0.0%	0.0%	0.0%	0.1%	0.0%	0.0%	0.1%	0.0%	0.0%	0.0%	0.0%	0.0%	0.0%	0.0%	0.0%	0.3%
K66.1.2 - Security and commodity contracts brokerage	0.5%	0.5%	0.1%	0.7%	0.0%	0.1%	0.2%	0.5%	0.2%	0.5%	0.5%	0.0%	0.5%	0.7%	0.7%	0.4%
K66.1.9 - Other activities auxiliary to financial services, except insurance and pension funding	0.9%	1.5%	0.0%	2.4%	0.0%	0.2%	0.4%	0.3%	0.1%	0.3%	0.0%	0.5%	0.3%	0.2%	1.1%	0.8%
K66.2.1 - Risk and damage evaluation	2.5%	0.0%	0.0%	0.0%	0.0%	0.0%	0.0%	0.0%	0.0%	0.0%	0.0%	0.0%	0.3%	0.0%	0.0%	0.3%
K66.2.2 - Activities of insurance agents and brokers	0.0%	0.0%	0.0%	0.0%	0.0%	0.0%	0.0%	0.0%	0.0%	0.0%	0.2%	0.0%	0.1%	0.0%	0.0%	0.1%
K66.2.9 - Other activities auxiliary to insurance and pension funding	0.0%	0.0%	0.0%	0.0%	0.0%	0.0%	0.0%	0.0%	0.2%	0.0%	0.0%	0.1%	0.0%	0.6%	0.0%	0.2%
K66.3.0 - Fund management activities	6.6%	6.3%	5.8%	8.0%	13.1%	6.7%	2.6%	2.0%	12.0%	1.9%	1.3%	15.8%	3.2%	4.7%	6.0%	9.5%
L - Real estate activities	1.6%	1.3%	0.6%	1.9%	1.3%	0.7%	2.5%	12.2%	0.6%	6.9%	0.5%	7.9%	1.4%	2.9%	6.4%	3.7%
M - Professional, scientific and technical activities	0.2%	0.2%	0.4%	0.9%	0.0%	0.4%	0.5%	0.3%	0.3%	0.1%	0.0%	0.7%	0.7%	0.4%	0.6%	0.6%
N - Administrative and support service activities	0.2%	0.0%	0.0%	0.3%	0.0%	0.1%	0.4%	0.3%	0.3%	0.2%	0.2%	0.4%	0.1%	0.2%	0.5%	0.2%
O - Public administration and defence; compulsory social security	50.8%	23.2%	64.9%	20.6%	55.2%	26.6%	34.9%	11.9%	51.8%	46.0%	65.0%	11.9%	38.9%	40.4%	16.5%	26.7%
P - Education	0.0%	0.0%	0.0%	0.0%	0.0%	0.1%	0.0%	0.0%	0.0%	0.0%	0.0%	0.0%	0.0%	0.0%	0.9%	0.1%
Q - Human health and social work activities	0.1%	0.1%	0.0%	0.1%	0.1%	0.0%	0.2%	0.2%	0.4%	0.4%	0.0%	0.2%	0.2%	0.0%	1.3%	0.3%
R - Arts, entertainment and recreation	0.0%	0.0%	0.0%	0.0%	0.0%	0.0%	0.1%	0.0%	0.0%	0.1%	0.0%	0.0%	0.0%	0.0%	0.1%	0.0%
S - Other services activities	0.0%	0.0%	0.0%	0.1%	0.0%	0.0%	0.2%	1.1%	0.3%	0.0%	0.0%	1.4%	0.1%	0.0%	0.5%	0.2%
T - Activities of households as employers; undifferentiated goods- and services - producing activities of households for own use	0.0%	0.0%	0.0%	0.0%	0.0%	0.0%	0.0%	0.0%	0.0%	0.0%	0.0%	0.0%	0.0%	0.0%	0.0%	1.4%
U - Activities of extraterritorial organisations and bodies	0.1%	0.0%	0.0%	0.7%	0.0%	0.0%	0.3%	0.0%	0.0%	0.0%	0.0%	0.1%	0.0%	0.1%	0.1%	0.2%

NACE (Nomenclature des Activités Économiques dans la Communauté Européenne) is the European statistical classification of economic activities. For assets with CIC 1, 2, 4 & 5.

- Figure 42 shows that the most prevalent NACE code sectors reported in 2019 are; K.64.1.9 – Other monetary intermediation, K64.3.0 – Trusts, funds and similar financial entities, K66.3.0 – Fund management activities, and O – Public administration and defence; compulsory social security.
- A non-negligible quantity of assets are being reported without a NACE code for some countries.

GETTING IN TOUCH WITH THE EU

In person

All over the European Union there are hundreds of Europe Direct information centres. You can find the address of the centre nearest you at: https://europa.eu/european-union/contact_en

On the phone or by email

Europe Direct is a service that answers your questions about the European Union. You can contact this service:

- by freephone: 00 800 6 7 8 9 10 11 (certain operators may charge for these calls),
- at the following standard number: +32 22999696 or
- by email via: https://europa.eu/european-union/contact_en

FINDING INFORMATION ABOUT THE EU

Online

Information about the European Union in all the official languages of the EU is available on the Europa website at: https://europa.eu/european-union/index_en

EU Publications

You can download or order free and priced EU publications at: <https://op.europa.eu/en/publications>. Multiple copies of free publications may be obtained by contacting Europe Direct or your local information centre (see https://europa.eu/european-union/contact_en).

EU law and related documents

For access to legal information from the EU, including all EU law since 1952 in all the official language versions, go to EUR-Lex at: <http://eur-lex.europa.eu>

Open data from the EU

The EU Open Data Portal (<http://data.europa.eu/euodp/en>) provides access to datasets from the EU. Data can be downloaded and reused for free, for both commercial and non-commercial purposes.

**EUROPEAN INSURANCE AND
OCCUPATIONAL PENSIONS AUTHORITY**

Westhafenplatz 1,
60327 Frankfurt am Main, Germany



Publications Office
of the European Union

ISBN 978-92-9473-277-4